



The Employment Situation of Immigrants and Natives in June 2020

Employment improved slightly more for immigrants, but remains dismal for both groups

By Steven A. Camarota, Jason Richwine, and Karen Zeigler

An analysis by the Center for Immigration Studies of public-use data released earlier this month by the Bureau of Labor Statistics shows that while there was some improvement in the number and share of native-born Americans and immigrants (legal and illegal) out of work, unemployment remains extraordinarily high. The unemployment rate improved slightly more for immigrants than for the native-born between May and June, but native unemployment at 10.7 percent remains a good deal lower than the 13.8 percent for immigrants. Despite the recent improvement, the 18.1 million unemployed immigrants and natives in June is still nearly three times what it was in June last year. While workers of every education level have experienced significant job losses during the Covid-19 shutdown, the situation for workers without a college education is especially bleak. It remains extremely difficult to justify the continued entry of new immigrants on the grounds of any “labor shortage”.

Among the findings:

- The unemployment rate for native-born Americans (ages 16-plus) was 10.7 percent in June. While lower than the 12.4 percent in May, it is still almost three times what it was before Covid-19 hit. Among immigrants (ages 16-plus), the rate was 13.8 percent in June, compared to 15.8 percent in May. The immigrant rate is still nearly four times what it was before Covid-19. (Figure 1, Table 1B)
- The number of natives and immigrants unemployed declined by about 12 percent for both groups between May and June. Still, the number of natives and immigrants unemployed stood at 18.1 million, nearly three times what it was in February, before Covid-19 hit. (Figure 2, Table 1A)
- In addition to the unemployed, there were 45.7 million working-age (16-64) native-born and 9.4 million working-age immigrants entirely out of the labor force — neither working nor looking for work. This is still 1.7 million higher for the native-born and 800,000 higher for immigrants than it was in February. (Table 2A)
- We estimate the unemployment rate for legal immigrants in June was 13.3 percent, an improvement from the 15.6 percent in May. The rate for illegal immigrants was 15.1 percent, an improvement from 16.4 percent in May. (Our estimates by legal status are approximations only.) (Table 4B)

Among the less-educated:

- The unemployment rate for the native-born (ages 25-plus) without a bachelor’s degree was 10.8 percent in June, compared to 6.6 percent for those with at least a bachelor’s. Among immigrants (ages 25-plus), 16.3 percent without a bachelor’s degree were unemployed, compared to 8.9 percent with a bachelor’s. (Table 1B)

Steven A. Camarota is the director of research and Karen Zeigler is a demographer at the Center. Jason Richwine, PhD, is a public policy analyst based in Washington, D.C., and a contributing writer at National Review.

- The unemployment rate (combined immigrant and native-born) in many jobs typically performed by the less-educated has improved but remains high. (Table 3C)
 - o 28.5 percent for food preparers and servers
 - o 21.4 percent for maids and housekeepers
 - o 20.1 percent for retail salespersons
 - o 15 percent for construction laborers
 - o 7.2 percent for health care aides and nursing assistants
- The Covid-19 shutdown has exacerbated the long-term decline in the labor force participation rate (share working or looking for work) of the less-educated. In June 2020, only 67 percent of working-age (16-64) natives without a bachelor's degree were in the labor force, down from 72 percent in 2007 and 76 percent in 2000. (Figure 5)
- Focusing only on men who are of prime working age (25 to 54) still shows a long-term decline in labor force participation. The share of these native-born men without a bachelors in the labor force was 83 percent in June 2020, compared to 88 percent in June 2007 and 90 percent in June 2000. (Figure 6)

Data and Methods

This report uses the Current Population Survey (CPS) to examine the employment situation in the United States as of June 2020, with particular attention paid to differences between immigrants and natives. Based on a monthly survey of 60,000 households, the CPS is the nation's primary source for the unemployment rate and other labor force statistics. The sample is weighted to reflect the actual size and demographic makeup of the civilian non-institutionalized population. The raw data used in this analysis comes directly from the Census Bureau, which collects the data for the Bureau of Labor Statistics.¹

Key Concepts and Terms. The labor force includes all workers, plus non-workers who have actively looked for work in the four weeks prior to the survey. The standard unemployment rate, referred to by the BLS as the U-3 rate, is calculated by dividing the number actively looking for work by the number in the labor force. The labor force participation rate is simply the share of people in the labor force.

Definition of Immigrant. The foreign-born in the CPS are all persons who were not U.S. citizens at birth. They include naturalized citizens, permanent residents (green card holders), temporary visitors, guestworkers, and illegal aliens. We use the term “immigrant” to encompass all of these foreign-born individuals. In Tables 1A, 1B, 2A and 2B we report figures separately for non-citizens and naturalized citizens. Tables 4A, 4B, 5A, and 5B report figures for legal immigrants and illegal immigrants separately.

Identifying Illegal Immigrants. Prior research indicates that most illegal immigrants are included in Census data. To determine which respondents are most likely to be illegal aliens, CIS first excludes immigrant respondents who are almost certainly not illegal aliens — for example, spouses of native-born citizens; veterans; people who have government jobs; Cubans (because of special rules for that country); immigrants who arrived before 1980 (because the 1986 amnesty should have already covered them); people in certain occupations requiring licensing, screening, or a government background check (e.g., doctors, pharmacists, and law enforcement); and people likely to be on student visas.

The remaining candidates are weighted to replicate known characteristics of the illegal population (population size, age, gender, region or country of origin, state of residence, and length of residence in the United States). CIS has previously used the Department of Homeland Security (DHS) as the source of those known characteristics; however, DHS data were last published in 2015. For more recent data, we turn to 2018 estimates from the Center for Migration Studies (CMS), including their estimates of educational attainment.² The resulting illegal population, which consists of a weighted set of CPS respondents, is designed to match CMS on the characteristics listed above. However, we do not adjust the number of illegal immigrants for undercount in the CPS.³ Estimates for legal immigrants are calculated simply by subtracting estimated counts of illegal immigrants from the total immigrant population.

All of our findings that separate immigrants by legal status should be considered rough approximations only. Because we do not have information about the illegal immigrant population in 2020, we are forced to take the known characteristics of illegal aliens from 2018 and apply them to the new labor market data in 2020. The primary weakness of this approach is that

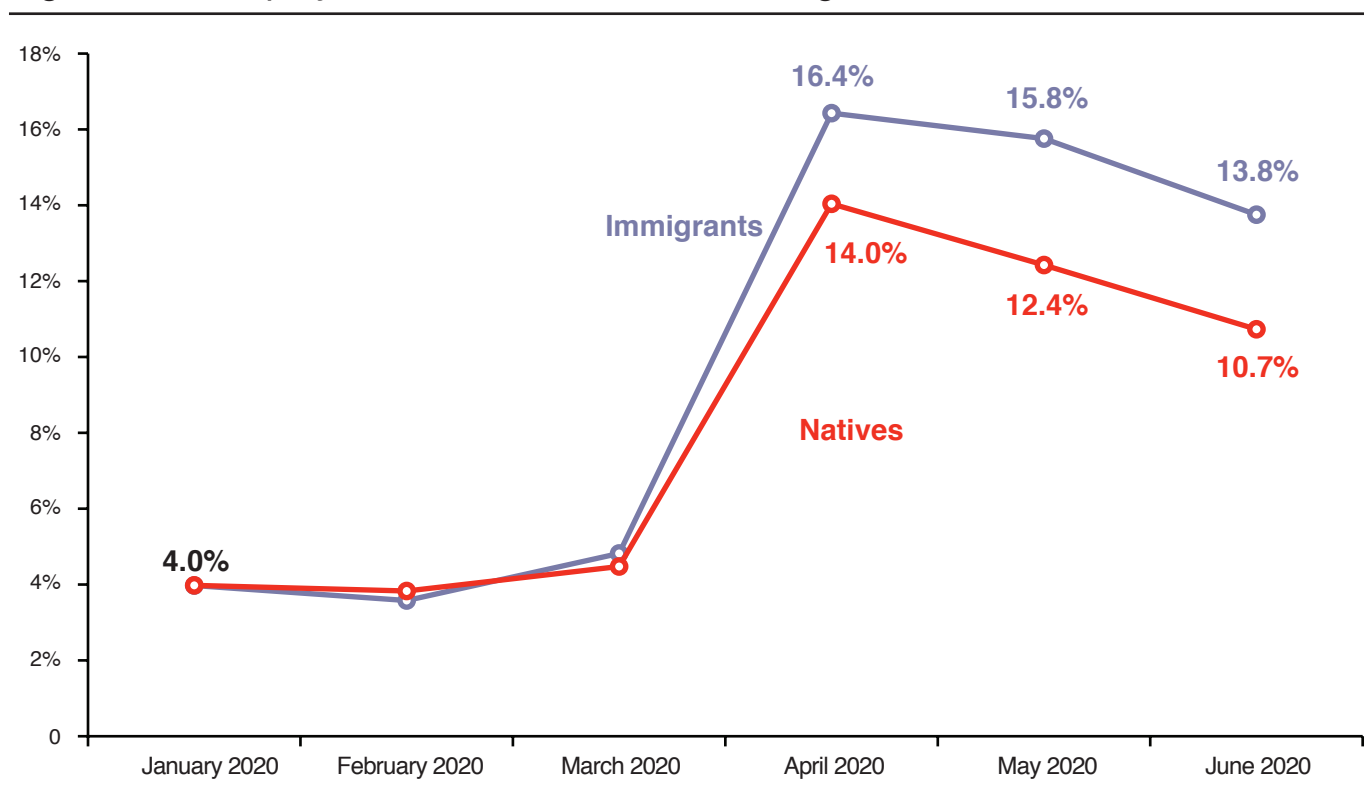
it assumes the illegal immigrant population still has the same demographic profile (population size, age, gender, etc.) as it did in 2018.

Matching Published BLS Tables. In this report, all statistics covering the entire population, such as the headline unemployment rate, match those published by the BLS. However, the counts and percentages for sub-populations will in some cases be slightly different. The reason is that the Census Bureau adds “perturbations” to the public-use microdata to protect respondent confidentiality. Fortunately, the Census Bureau states that any differences between published figures and those calculated from the public-use data will be so small that they “fall well within the sampling variability associated with CPS estimates”.⁴ In other words, there should be no meaningful difference between statistics calculated from the public-use data and those published by the BLS.

Finally, the figures in this report are not seasonally adjusted. Unadjusted figures are conceptually simpler and easier for other researchers to replicate.⁵ Also, the limited number of statistics on the foreign-born published in the BLS monthly “Employment Situation” reports are also not seasonally adjusted.

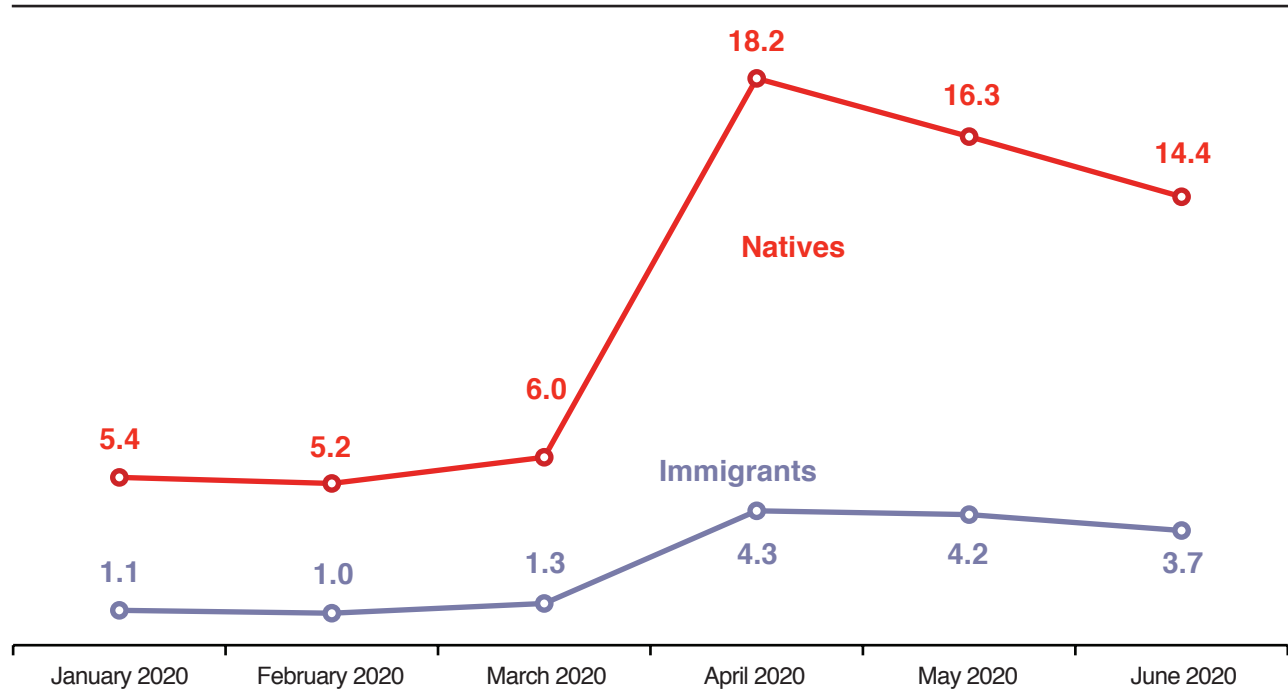
Potential Problems with the Data. The BLS reports a potential problem with the CPS for March, April, May, and June.⁶ First, the response rates in all these months were significantly lower than prior months. This increased the sampling error of the surveys for these months. However, “BLS was still able to obtain estimates that met our standards for accuracy and reliability,” according to statement from the bureau. Second, interviewers who administered the survey miscoded some respondents as employed when they were on furlough, temporarily laid off, or in similar situations. They should have been considered temporarily laid off and coded as unemployed. The number unemployed and the unemployment rate would be higher in March through June if these individuals were counted as unemployed. Neither the Census Bureau, which collects the data, nor the BLS has altered the data in response to these issues. Our analysis takes the raw CPS data as provided; and our results match published non-seasonally adjusted figures, with the caveats about perturbations in public-use data discussed above.

Figure 1. Unemployment Rate, Natives and Immigrants



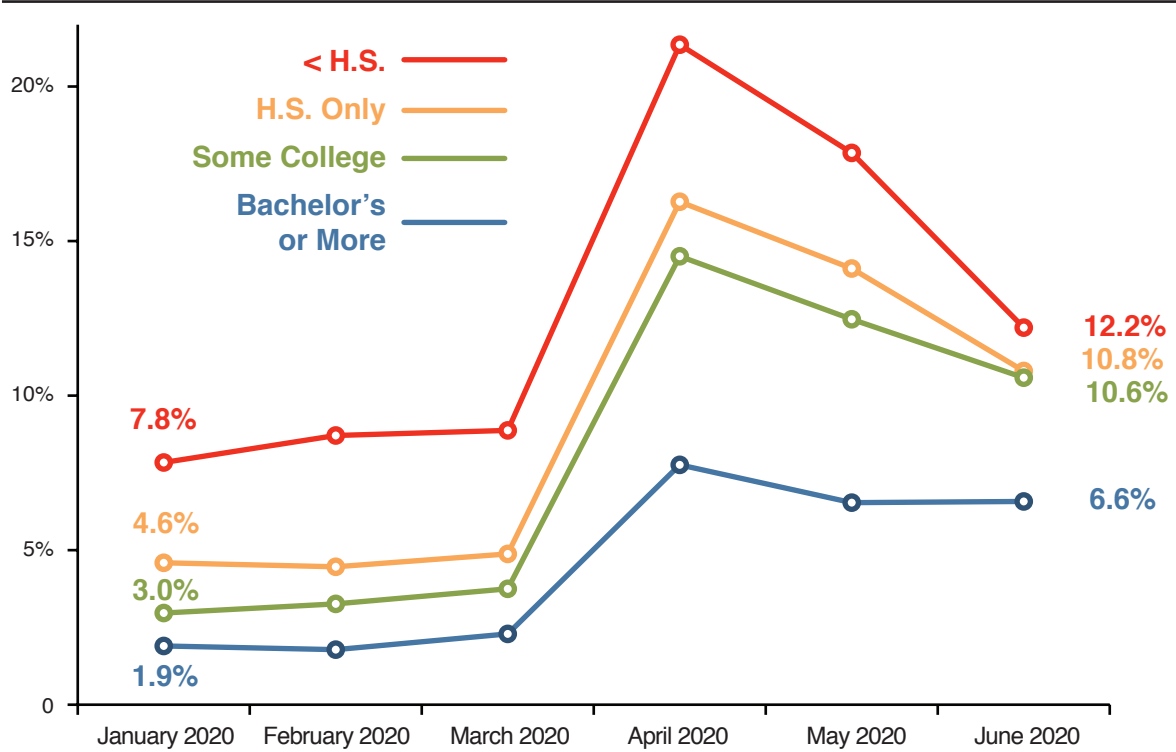
Source: Public-use files of the monthly Current Population Survey. Figures are for persons 16 and older. Immigrants (legal and illegal) are also referred to as the “foreign-born”. Public-use data may differ slightly from published BLS numbers; see text for details.

Figure 2. Number of Natives and Immigrants Unemployed (millions)



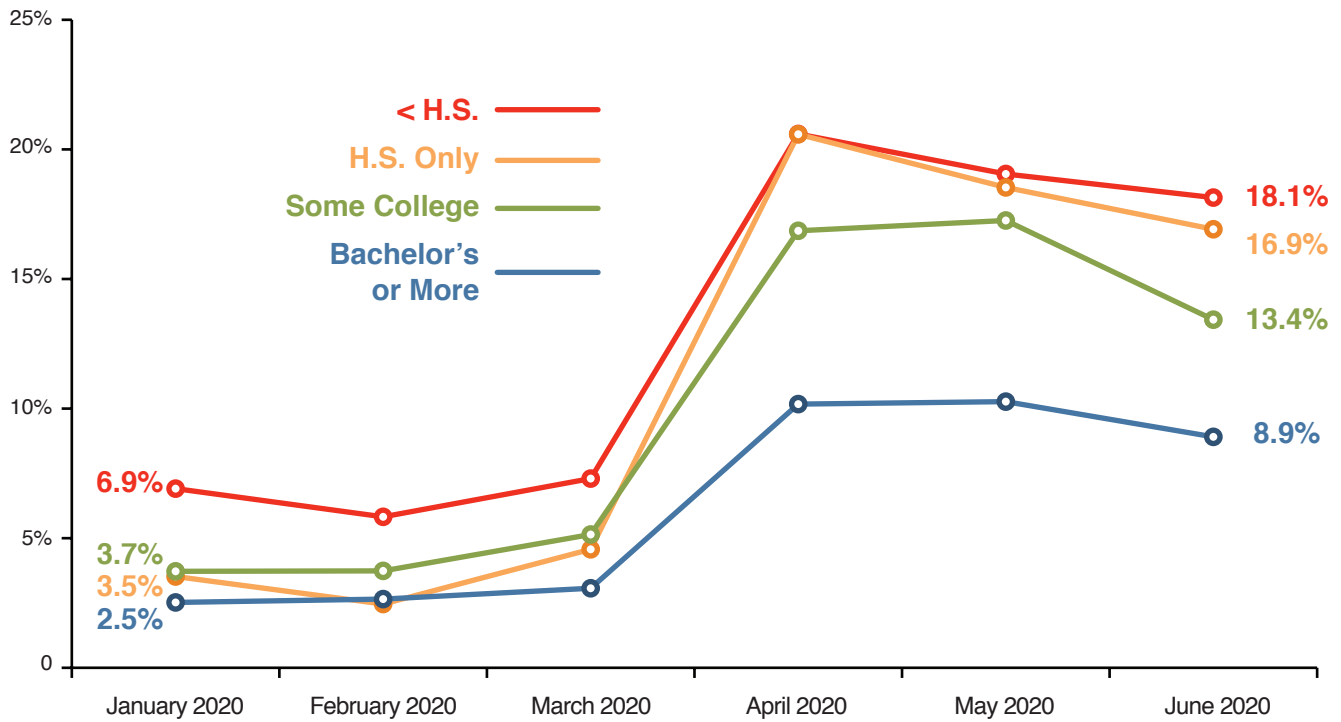
Source: Public-use files of the monthly Current Population Survey. Figures are for persons 16 and older. Immigrants (legal and illegal) are also referred to as the “foreign-born”. Public-use data may differ slightly from published BLS numbers; see text for details.

Figure 3. Unemployment Rate, Native-Born Only, by Education



Source: Public-use files of the monthly Current Population Survey. Figures are for persons 25 and older. Public-use data may differ slightly from published BLS numbers; see text for details.

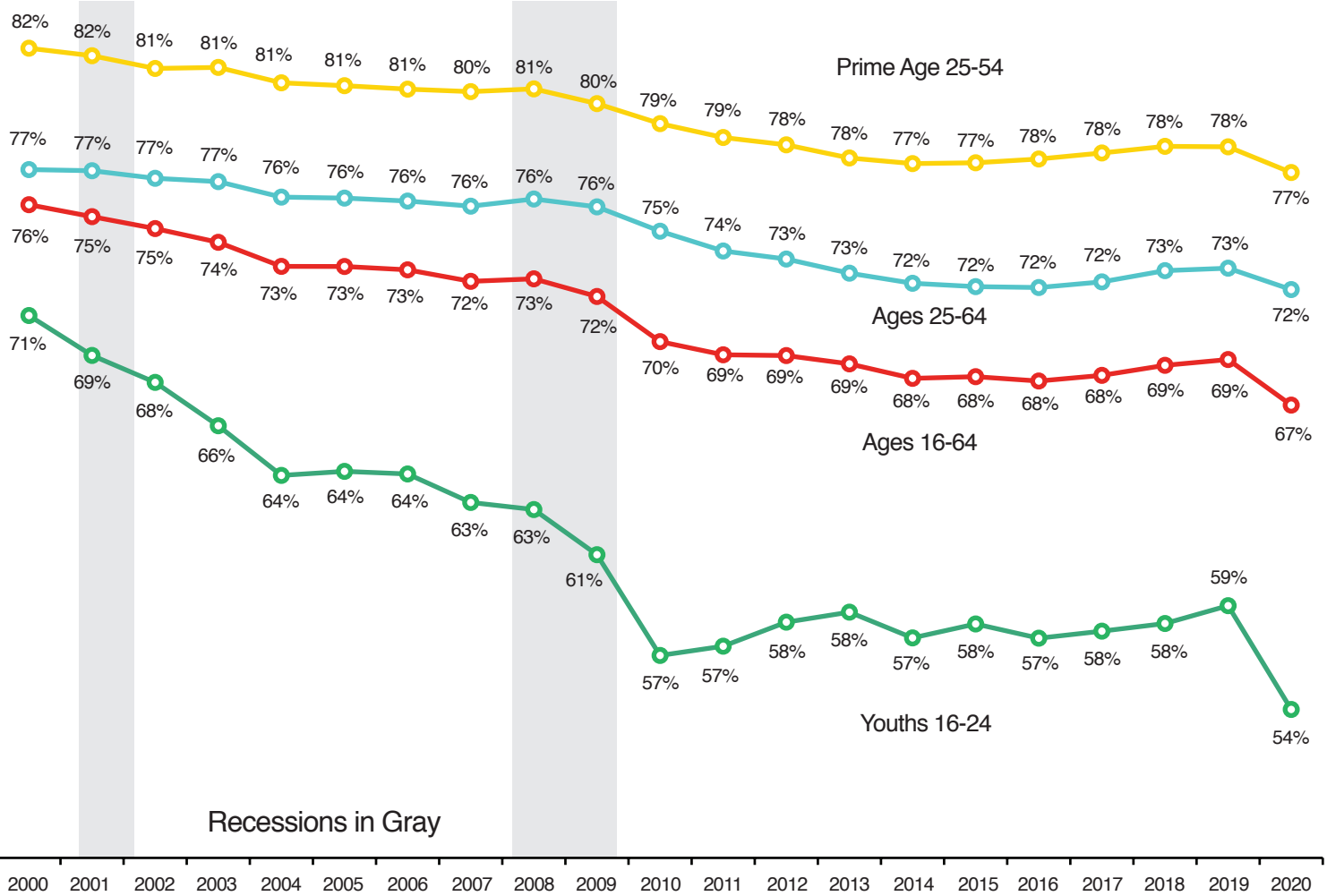
Figure 4. Unemployment Rate, Immigrants Only, by Education



Source: Public-use files of the monthly Current Population Survey. Figures are for persons 25 and older. Immigrants (legal and illegal) are also referred to as the “foreign-born”. Public-use data may differ slightly from published BLS numbers; see text for details.

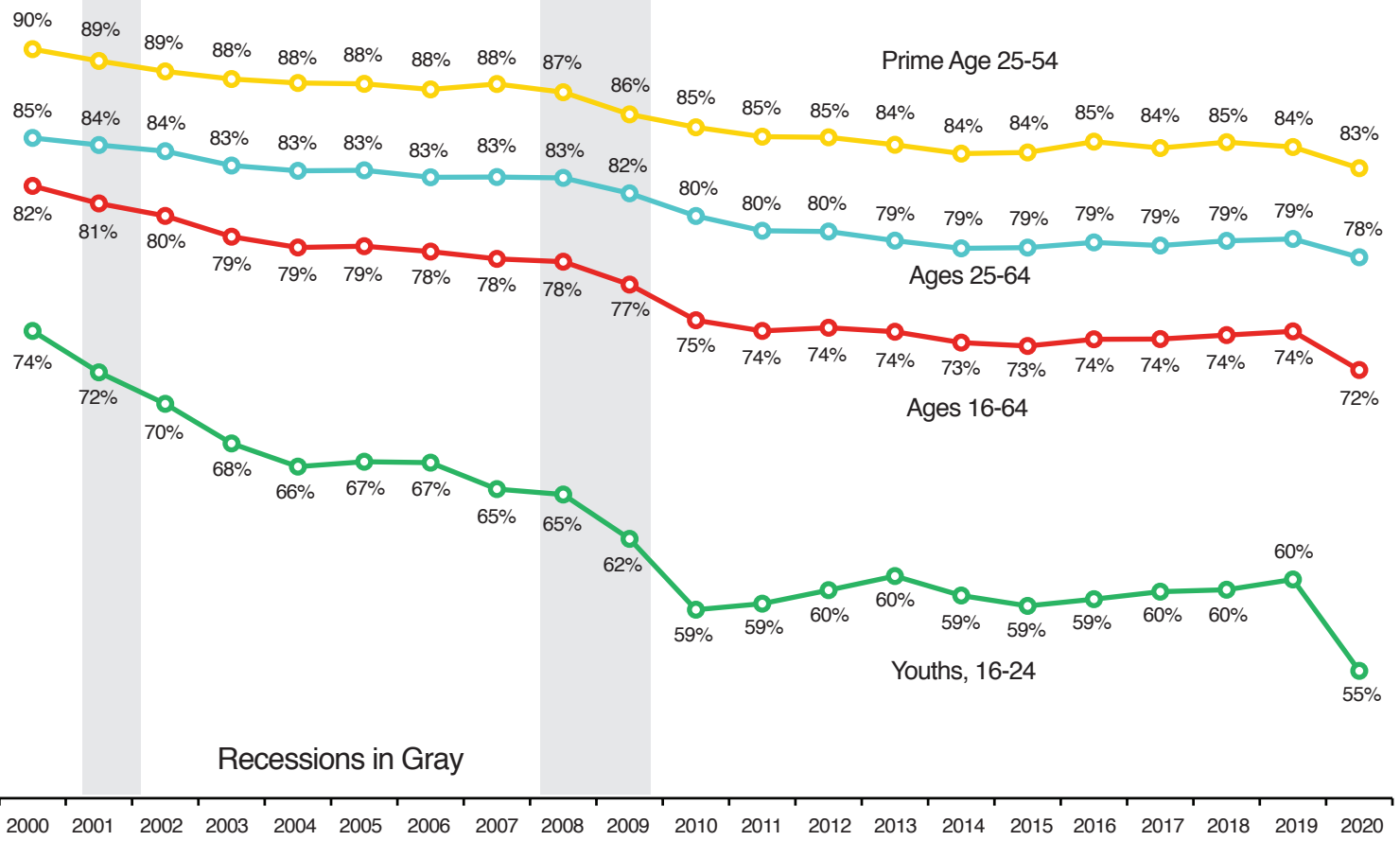
Figure 5. Labor Force Participation for Less-Educated Natives, June 2000 to 2020

There has been a long-term decline in labor force participation for natives without a bachelor’s degree that the Covid-19 shutdown has exacerbated.



Source: June public-use files of the monthly Current Population Survey 2000 to 2020. Figures are only for the native-born. Public-use data may differ slightly from published BLS numbers; see text for details.
 The labor force participation rate is the share of persons by age group working or looking for work.

Figure 6. Labor Force Participation for Less-Educated Native-Born Men, June 2000 to 2020
 There has been a long-term decline in labor force participation for native-born men without a bachelor's degree that the Covid-19 shutdown has exacerbated.



Source: June public-use files of the monthly Current Population Survey 2000 to 2020. Figures are only for the native-born. Public-use data may differ slightly from published BLS numbers; see text for details.
 The labor force participation rate is the share of persons by age group working or looking for work.

Table 1A. Natives and Immigrants Employed and Unemployed (thousands)

	Number Working						Number Unemployed					
	Feb. 20	Mar. 20	Apr. 20	May 20	June 20	June 19	Feb. 20	Mar. 20	Apr. 20	May 20	June 20	June 19
All U.S. Residents 16+	158,017	155,167	133,326	137,461	142,811	157,828	6,218	7,370	22,504	20,514	18,072	6,292
Youths (16-24)	19,082	18,060	13,112	14,352	16,553	20,639	1,655	2,007	4,817	4,870	4,517	2,111
All Residents 25+	138,936	137,107	120,214	123,109	126,259	137,189	4,563	5,363	17,687	15,644	13,556	4,180
Without Bachelor's	79,535	77,682	65,005	67,161	69,157	80,373	3,391	3,884	12,775	11,312	9,277	2,893
<High School	8,653	8,420	6,856	6,878	7,209	9,685	667	732	1,815	1,561	1,317	467
H.S. Only	34,757	33,465	27,497	28,684	29,301	34,553	1,484	1,697	5,645	5,031	3,967	1,324
Some College	36,125	35,797	30,652	31,598	32,648	36,135	1,240	1,455	5,314	4,720	3,993	1,101
Bachelor's or More	59,401	59,425	55,208	55,948	57,101	56,816	1,172	1,479	4,912	4,332	4,279	1,288
Natives 16+	130,360	128,725	111,389	115,057	119,730	130,215	5,191	6,031	18,191	16,323	14,392	5,512
Youths (16-24)	17,300	16,527	12,199	13,378	15,380	19,031	1,533	1,861	4,422	4,457	4,193	1,973
Natives 25+	113,060	112,198	99,190	101,679	104,350	111,184	3,658	4,169	13,770	11,866	10,199	3,539
Without Bachelor's	64,111	63,214	53,176	55,138	56,712	64,078	2,771	3,021	9,899	8,610	6,846	2,456
<High School	3,915	3,724	3,062	3,186	3,395	4,227	374	363	831	692	472	295
H.S. Only	28,295	27,692	22,850	23,658	24,210	28,025	1,321	1,420	4,441	3,887	2,930	1,175
Some College	31,901	31,799	27,264	28,294	29,106	31,826	1,076	1,239	4,627	4,031	3,444	986
Bachelor's or More	48,949	48,984	46,014	46,541	47,639	47,106	888	1,148	3,871	3,255	3,353	1,083
All Immigrants 16+	27,657	26,442	21,937	22,404	23,081	27,613	1,026	1,339	4,313	4,191	3,680	779
Youths (16-24)	1,781	1,533	913	973	1,173	1,608	122	145	396	413	323	138
All Immigrants 25+	25,876	24,909	21,024	21,431	21,908	26,005	905	1,194	3,917	3,778	3,357	641
Without Bachelor's	15,424	14,468	11,830	12,023	12,446	16,295	620	863	2,876	2,702	2,431	437
<High School	4,738	4,696	3,794	3,692	3,813	5,458	293	370	984	869	845	172
H.S. Only	6,462	5,774	4,647	5,026	5,091	6,528	163	277	1,205	1,143	1,037	149
Some College	4,224	3,999	3,388	3,305	3,542	4,309	164	217	687	689	549	115
Bachelor's or More	10,452	10,441	9,194	9,408	9,462	9,709	285	331	1,041	1,077	926	205
Naturalized Citizens 16+	14,128	13,461	11,661	11,920	12,580	14,035	414	595	2,063	2,068	1,903	316
Youths (16-24)	553	398	239	316	459	559	51	40	138	131	109	21
Naturalized Citizens 25+	13,575	13,063	11,421	11,604	12,121	13,476	363	555	1,926	1,937	1,794	295
Without Bachelor's	7,255	6,817	5,779	5,835	6,158	7,686	226	336	1,282	1,306	1,251	187
<High School	1,438	1,441	1,180	1,158	1,227	1,639	60	86	322	262	254	38
H.S. Only	3,148	2,885	2,427	2,549	2,561	3,161	74	129	536	602	592	77
Some College	2,669	2,491	2,172	2,128	2,370	2,886	92	121	423	442	405	72
Bachelor's or More	6,320	6,246	5,643	5,769	5,963	5,790	137	219	644	632	543	108
Non-Citizens 16+	13,529	12,981	10,276	10,484	10,501	13,578	612	744	2,249	2,122	1,778	463
Youths (16-24)	1,228	1,135	674	657	714	1,050	71	105	258	282	215	117
Non-Citizens 25+	12,301	11,846	9,602	9,826	9,787	12,529	542	639	1,991	1,841	1,563	346
Without Bachelor's	8,169	7,651	6,051	6,188	6,288	8,609	394	527	1,594	1,396	1,180	249
<High School	3,300	3,255	2,615	2,534	2,586	3,820	233	283	662	607	591	134
H.S. Only	3,314	2,888	2,220	2,477	2,530	3,366	89	148	669	542	445	72
Some College	1,555	1,508	1,216	1,177	1,172	1,424	72	96	264	248	144	43
Bachelor's or More	4,132	4,195	3,552	3,638	3,499	3,919	148	112	397	445	383	97

Source: Public-use files of the monthly Current Population Survey. Public-use data may differ slightly from published BLS numbers; see text for details. Immigrants (legal and illegal) are also referred to as the "foreign-born". Figures for all immigrants and non-citizens include illegal immigrants.

**Table 1B. Native and Immigrant
Unemployment Rate**

	Feb. 20	Mar. 20	Apr. 20	May 20	June 20	June 19
All U.S. Residents 16+	3.8%	4.5%	14.4%	13.0%	11.2%	3.8%
Youths (16-24)	8.0%	10.0%	26.9%	25.3%	21.4%	9.3%
All Residents 25+	3.2%	3.8%	12.8%	11.3%	9.7%	3.0%
Without Bachelor's	4.1%	4.8%	16.4%	14.4%	11.8%	3.5%
<High School	7.2%	8.0%	20.9%	18.5%	15.4%	4.6%
H.S. Only	4.1%	4.8%	17.0%	14.9%	11.9%	3.7%
Some College	3.3%	3.9%	14.8%	13.0%	10.9%	3.0%
Bachelor's or More	1.9%	2.4%	8.2%	7.2%	7.0%	2.2%
Natives 16+	3.8%	4.5%	14.0%	12.4%	10.7%	4.1%
Youths (16-24)	8.1%	10.1%	26.6%	25.0%	21.4%	9.4%
Natives 25+	3.1%	3.6%	12.2%	10.5%	8.9%	3.1%
Without Bachelor's	4.1%	4.6%	15.7%	13.5%	10.8%	3.7%
<High School	8.7%	8.9%	21.4%	17.9%	12.2%	6.5%
H.S. Only	4.5%	4.9%	16.3%	14.1%	10.8%	4.0%
Some College	3.3%	3.7%	14.5%	12.5%	10.6%	3.0%
Bachelor's or More	1.8%	2.3%	7.8%	6.5%	6.6%	2.2%
All Immigrants 16+	3.6%	4.8%	16.4%	15.8%	13.8%	2.7%
Youths (16-24)	6.4%	8.7%	30.2%	29.8%	21.6%	7.9%
All Immigrants 25+	3.4%	4.6%	15.7%	15.0%	13.3%	2.4%
Without Bachelor's	3.9%	5.6%	19.6%	18.3%	16.3%	2.6%
<High School	5.8%	7.3%	20.6%	19.1%	18.1%	3.1%
H.S. Only	2.5%	4.6%	20.6%	18.5%	16.9%	2.2%
Some College	3.7%	5.1%	16.9%	17.3%	13.4%	2.6%
Bachelor's or More	2.7%	3.1%	10.2%	10.3%	8.9%	2.1%
Naturalized Citizens 16+	2.8%	4.2%	15.0%	14.8%	13.1%	2.2%
Youths (16-24)	8.5%	9.2%	36.5%	29.3%	19.1%	3.7%
Naturalized Citizens 25+	2.6%	4.1%	14.4%	14.3%	12.9%	2.1%
Without Bachelor's	3.0%	4.7%	18.2%	18.3%	16.9%	2.4%
<High School	4.0%	5.7%	21.5%	18.5%	17.1%	2.3%
H.S. Only	2.3%	4.3%	18.1%	19.1%	18.8%	2.4%
Some College	3.3%	4.6%	16.3%	17.2%	14.6%	2.4%
Bachelor's or More	2.1%	3.4%	10.2%	9.9%	8.3%	1.8%
Non-Citizens 16+	4.3%	5.4%	18.0%	16.8%	14.5%	3.3%
Youths (16-24)	5.4%	8.5%	27.7%	30.0%	23.1%	10.0%
Non-Citizens 25+	4.2%	5.1%	17.2%	15.8%	13.8%	2.7%
Without Bachelor's	4.6%	6.4%	20.9%	18.4%	15.8%	2.8%
<High School	6.6%	8.0%	20.2%	19.3%	18.6%	3.4%
H.S. Only	2.6%	4.9%	23.1%	17.9%	15.0%	2.1%
Some College	4.4%	6.0%	17.8%	17.4%	11.0%	3.0%
Bachelor's or More	3.5%	2.6%	10.1%	10.9%	9.9%	2.4%

Source: Public-use files of the monthly Current Population Survey. Public-use data may differ slightly from published BLS numbers; see text for details. Immigrants (legal and illegal) are also referred to as the “foreign-born”. Figures for all immigrants and non-citizens include illegal immigrants.

Table 2A. Natives and Immigrants in & out of the Labor Force (thousands)

	Number in Labor Force						Number Not in Labor Force					
	Feb. 20	Mar. 20	Apr. 20	May 20	June 20	June 19	Feb. 20	Mar. 20	Apr. 20	May 20	June 20	June 19
All U.S. Residents 16-64	153,022	151,851	145,526	147,868	150,603	153,763	52,660	53,832	60,162	57,854	55,116	52,484
Youths (16-24)	20,736	20,067	17,929	19,222	21,069	22,751	16,775	17,437	19,568	18,266	16,410	14,988
All Residents 25-64	132,286	131,785	127,597	128,647	129,534	131,013	35,885	36,395	40,593	39,587	38,706	37,497
Without Bachelor's	76,514	75,448	71,898	72,605	72,549	77,247	27,229	27,452	29,976	29,205	28,232	28,194
<High School	8,606	8,442	8,082	7,869	7,955	9,468	5,465	5,554	6,090	5,818	5,707	6,136
H.S. Only	33,451	32,481	30,579	31,146	30,628	33,302	12,303	12,290	13,554	13,241	12,916	12,430
Some College	34,457	34,524	33,237	33,590	33,966	34,477	9,462	9,608	10,333	10,146	9,610	9,628
Bachelor's or More	55,772	56,337	55,698	56,042	56,985	53,766	8,655	8,943	10,617	10,382	10,474	9,303
Natives 16-64	125,992	125,580	120,571	122,521	125,076	126,737	44,044	44,934	49,775	47,995	45,698	43,306
Youths (16-24)	18,833	18,388	16,621	17,836	19,573	21,004	15,179	15,839	17,827	16,632	14,864	13,535
Natives 25-64	107,159	107,192	103,951	104,686	105,504	105,733	28,865	29,095	31,948	31,363	30,834	29,772
Without Bachelor's	61,421	60,908	57,915	58,607	58,382	61,378	22,215	22,215	23,759	23,368	22,629	22,733
<High School	3,892	3,697	3,551	3,549	3,526	4,142	3,362	3,463	3,595	3,540	3,515	3,729
H.S. Only	27,177	26,705	24,978	25,256	24,792	26,968	10,503	10,263	11,157	10,894	10,724	10,458
Some College	30,351	30,506	29,386	29,802	30,064	30,268	8,351	8,489	9,007	8,834	8,391	8,546
Bachelor's or More	45,738	46,284	46,036	46,079	47,121	44,355	6,650	6,880	8,189	8,096	8,205	7,039
All Immigrants 16-64	27,030	26,271	24,955	25,347	25,527	27,026	8,616	8,898	10,387	9,858	9,419	9,178
Youths (16-24)	1,903	1,678	1,309	1,386	1,496	1,746	1,596	1,599	1,741	1,634	1,546	1,453
All Immigrants 25-64	25,127	24,593	23,646	23,961	24,030	25,280	7,020	7,300	8,646	8,224	7,873	7,725
Without Bachelor's	15,093	14,540	13,984	13,998	14,167	15,870	5,014	5,237	6,218	5,937	5,603	5,461
<High School	4,714	4,746	4,532	4,320	4,429	5,326	2,103	2,092	2,495	2,278	2,192	2,406
H.S. Only	6,273	5,776	5,601	5,890	5,836	6,334	1,800	2,027	2,396	2,347	2,192	1,971
Some College	4,106	4,019	3,851	3,787	3,902	4,209	1,111	1,119	1,327	1,313	1,219	1,083
Bachelor's or More	10,033	10,052	9,663	9,963	9,863	9,410	2,006	2,062	2,428	2,287	2,269	2,265
Naturalized Cit. 16-64	13,348	12,892	12,685	13,029	13,472	13,339	3,541	3,525	4,325	4,199	4,159	3,687
Youths (16-24)	604	438	377	447	568	580	472	455	531	497	475	404
Naturalized Cit. 25-64	12,744	12,453	12,308	12,582	12,904	12,759	3,068	3,070	3,794	3,703	3,684	3,283
Without Bachelor's	6,845	6,596	6,536	6,641	6,852	7,288	2,107	2,136	2,628	2,594	2,584	2,311
<High School	1,330	1,336	1,350	1,278	1,318	1,500	607	600	708	702	747	742
H.S. Only	2,976	2,815	2,778	2,957	2,904	2,991	865	874	1,125	1,094	1,095	919
Some College	2,539	2,445	2,408	2,406	2,631	2,797	635	662	795	798	741	649
Bachelor's or More	5,899	5,857	5,772	5,941	6,052	5,472	961	933	1,166	1,109	1,101	973
Non-Citizens 16-64	13,681	13,380	12,270	12,318	12,054	13,687	5,075	5,373	6,062	5,659	5,259	5,491
Youths (16-24)	1,299	1,240	932	939	928	1,167	1,124	1,143	1,210	1,137	1,071	1,049
Non-Citizens 25-64	12,383	12,140	11,338	11,379	11,126	12,520	3,951	4,230	4,852	4,521	4,188	4,442
Without Bachelor's	8,249	7,944	7,447	7,357	7,315	8,582	2,907	3,101	3,590	3,344	3,019	3,150
<High School	3,384	3,410	3,182	3,042	3,111	3,826	1,496	1,492	1,786	1,576	1,445	1,664
H.S. Only	3,297	2,960	2,822	2,933	2,932	3,344	935	1,153	1,271	1,253	1,097	1,053
Some College	1,567	1,574	1,443	1,381	1,271	1,412	476	456	532	515	478	433
Bachelor's or More	4,134	4,195	3,891	4,022	3,811	3,938	1,044	1,129	1,262	1,178	1,169	1,292

Source: Public-use files of the monthly Current Population Survey. Public-use data may differ slightly from published BLS numbers; see text for details. Immigrants (legal and illegal) are also referred to as the "foreign-born". Figures for all immigrants and non-citizens include illegal immigrants. Those in the labor force are either working or looking for work.

Table 2B. Native and Immigrant Labor Force Participation Rate

	Feb. 20	Mar. 20	Apr. 20	May 20	June 20	June 19
All U.S. Residents 16-64	74%	74%	71%	72%	73%	75%
Youths (16-24)	55%	54%	48%	51%	56%	60%
All Residents 25-64	79%	78%	76%	76%	77%	78%
Without Bachelor's	74%	73%	71%	71%	72%	73%
<High School	61%	60%	57%	57%	58%	61%
H.S. Only	73%	73%	69%	70%	70%	73%
Some College	78%	78%	76%	77%	78%	78%
Bachelor's or More	87%	86%	84%	84%	84%	85%
Natives 16-64	74%	74%	71%	72%	73%	75%
Youths (16-24)	55%	54%	48%	52%	57%	61%
Natives 25-64	79%	79%	76%	77%	77%	78%
Without Bachelor's	73%	73%	71%	72%	72%	73%
<High School	54%	52%	50%	50%	50%	53%
H.S. Only	72%	72%	69%	70%	70%	72%
Some College	78%	78%	77%	77%	78%	78%
Bachelor's or More	87%	87%	85%	85%	85%	86%
All Immigrants 16-64	76%	75%	71%	72%	73%	75%
Youths (16-24)	54%	51%	43%	46%	49%	55%
All Immigrants 25-64	78%	77%	73%	74%	75%	77%
Without Bachelor's	75%	74%	69%	70%	72%	74%
<High School	69%	69%	64%	65%	67%	69%
H.S. Only	78%	74%	70%	72%	73%	76%
Some College	79%	78%	74%	74%	76%	80%
Bachelor's or More	83%	83%	80%	81%	81%	81%
Naturalized Cit. 16-64	79%	79%	75%	76%	76%	78%
Youths (16-24)	56%	49%	42%	47%	54%	59%
Naturalized Cit. 25-64	81%	80%	76%	77%	78%	80%
Without Bachelor's	76%	76%	71%	72%	73%	76%
<High School	69%	69%	66%	65%	64%	67%
H.S. Only	77%	76%	71%	73%	73%	76%
Some College	80%	79%	75%	75%	78%	81%
Bachelor's or More	86%	86%	83%	84%	85%	85%
Non-Citizens 16-64	73%	71%	67%	69%	70%	71%
Youths (16-24)	54%	52%	43%	45%	46%	53%
Non-Citizens 25-64	76%	74%	70%	72%	73%	74%
Without Bachelor's	74%	72%	67%	69%	71%	73%
<High School	69%	70%	64%	66%	68%	70%
H.S. Only	78%	72%	69%	70%	73%	76%
Some College	77%	78%	73%	73%	73%	77%
Bachelor's or More	80%	79%	76%	77%	77%	75%

Source: Public-use files of the monthly Current Population Survey. Public-use data may differ slightly from published BLS numbers; see text for details. Immigrants (legal and illegal) are also referred to as the “foreign-born”. Figures for all immigrants and non-citizens include illegal immigrants. Those in the labor force are either working or looking for work.

Table 3A. No. of Natives and Immigrants Working by Occupation, 2020 (thousands)

Occupation (Occupation Codes)	Number Working									
	Natives					Immigrants				
	Feb.	Mar.	Apr.	May	June	Feb.	Mar.	Apr.	May	June
Management (0010-0440)	16,269	16,458	15,623	15,815	16,478	2,485	2,415	2,293	2,354	2,452
Food service managers (0310)	969	918	826	720	733	n/a	n/a	n/a	n/a	n/a
Business & financial operations (0500-0960)	7,925	7,791	7,351	7,143	6,812	1,163	1,254	1,143	1,257	1,150
Computer & mathematical (1005-1240)	4,162	4,105	4,279	4,267	4,468	1,503	1,542	1,472	1,494	1,529
Computer fields (1005-1021)	2,014	2,056	2,123	2,202	2,257	948	1,045	988	1,013	1,043
Architecture & engineering (1305-1560)	2,626	2,633	2,526	2,590	2,489	664	617	530	576	515
Engineers (1320-1530)	1,790	1,845	1,776	1,795	1,777	549	487	451	458	436
Life, physical, & social science (1600-1980)	1,229	1,265	1,196	1,314	1,356	349	303	330	312	360
Community & social service (2001-2060)	2,545	2,481	2,424	2,469	2,559	n/a	n/a	n/a	n/a	n/a
Legal occupations (2100-2180)	1,727	1,715	1,588	1,721	1,739	n/a	n/a	n/a	n/a	n/a
Education instruction & library (2205-2555)	8,700	8,607	7,447	7,635	7,647	1,016	954	834	810	856
Arts, design, ent., sports, media (2600-2920)	2,899	2,947	2,397	2,470	2,596	470	522	324	347	330
Healthcare practitioner & technical (3000-3550)	8,336	8,370	7,610	7,866	8,001	1,574	1,392	1,396	1,473	1,470
Registered nurses (3255)	2,688	2,676	2,596	2,699	2,736	493	425	479	530	499
Medical technologists, techs, LPNs (3300-3500)	2,581	2,781	2,313	2,368	2,347	436	362	397	404	405
Healthcare support (3601-3655)	4,023	4,029	3,379	3,389	3,517	1,121	1,064	945	883	984
Health care aids, nurse assists. (3601-3603)	2,649	2,616	2,263	2,180	2,319	835	854	783	765	848
Protective service (3700-3960)	2,919	2,758	2,606	2,606	2,840	n/a	n/a	n/a	n/a	n/a
Food preparation & serving related (4000-4150)	6,609	6,246	3,412	3,874	4,590	1,878	1,647	934	953	1,093
Chefs, head cooks, & cooks (4020, 4000)	1,787	1,705	1,119	1,209	1,240	839	762	423	412	462
Food prep. & fast food/counter (4030, 4055)	1,415	1,309	898	988	1,268	307	263	184	229	270
Waiters & waitresses (4110)	1,692	1,670	578	739	962	361	300	149	117	155
Build. & grounds cleaning, maint. (4200-4255)	3,346	3,397	2,790	2,982	3,352	1,973	1,940	1,523	1,614	1,591
Janitors & building cleaners (4220)	1,468	1,536	1,232	1,242	1,318	664	762	633	614	557
Maids & housekeeping cleaners (4230)	654	567	396	417	558	813	725	413	455	471
Landscapers, trimmers, grounds(4251-4255)	683	745	676	862	974	345	329	312	324	391
Personal care & service (4330-4655)	3,244	3,233	1,875	2,187	2,654	909	847	446	411	398
Hair, cosmetologists, barbers (4510, 4500)	718	743	315	515	607	n/a	n/a	n/a	n/a	n/a
Childcare workers (4600)	918	978	646	615	768	n/a	n/a	n/a	n/a	n/a
Sales & related (4700-4965)	13,206	12,834	10,592	11,006	11,808	1,862	1,762	1,630	1,437	1,698
First-line super. retail sales workers (4700)	2,707	2,568	2,429	2,434	2,537	405	439	393	391	387
Cashiers (4720)	2,409	2,273	1,713	1,801	1,991	437	387	347	265	273
Retail salespersons (4760)	2,555	2,573	1,695	2,024	2,410	335	329	231	195	318
Office & administrative support (5000-5940)	14,437	14,455	12,792	12,864	13,376	1,863	1,832	1,537	1,633	1,637
Customer service representatives (5240)	2,235	2,179	1,942	1,831	2,033	n/a	n/a	n/a	n/a	n/a
Receptionists & information clerks (5400)	1,137	1,147	829	899	895	n/a	n/a	n/a	n/a	n/a
Farming, fishing, & forestry (6005-6130)	667	659	675	724	645	477	446	403	395	302
Agricultural workers (6050)	467	490	485	547	511	421	381	349	352	277
Construction & Extraction (6200-6950)	5,677	5,586	4,730	5,075	5,344	2,465	2,442	1,819	1,799	2,013
Construction only (6200-6765)	5,526	5,453	4,616	4,959	5,213	2,446	2,423	1,804	1,792	2,003
Carpenters (6230)	716	814	667	741	681	405	364	304	283	307
Construction laborers (6260)	1,251	1,223	1,006	1,020	1,086	787	762	612	606	694
Installation, maint., & repair (7000-7640)	4,165	4,039	3,575	3,596	3,849	755	746	617	771	606
Production (7700-8990)	6,373	6,207	5,025	5,404	5,648	1,990	1,771	1,346	1,464	1,553
Butchers, meat & other food proc. (7810-7855)	369	371	325	294	311	212	214	207	181	119
Transpo. & material moving (9005-9760)	9,274	8,910	7,498	8,060	7,963	2,497	2,311	1,904	1,834	1,920
Driver/sales workers & truck drivers (9130)	2,658	2,803	2,534	2,807	2,733	765	721	695	697	600
Laborers, freight, stock & material mov. (9620)	1,951	1,679	1,287	1,362	1,487	426	431	303	255	240
Stockers & order fillers (9645)	1,297	1,300	1,183	1,317	1,365	n/a	n/a	n/a	n/a	n/a
Total	130,360	128,725	111,389	115,057	119,730	27,657	26,442	21,937	22,404	23,081

Source: Public-use files of the monthly Current Population Survey. Figures are for persons 16 and older. Public-use data may differ slightly from published BLS numbers; see text for details. Immigrants (legal and illegal) are also referred to as the “foreign-born”. Data not available (n/a) due to small sample size. The new occupational codes for 2020 can be found [here](#).

Table 3B. No. of Natives and Immigrants Unemployed by Occupation, 2020 (thousands)

Occupation (Occupation Codes)	Number Unemployed									
	Natives					Immigrants				
	Feb.	Mar.	Apr.	May	June	Feb.	Mar.	Apr.	May	June
Management (0010-0440)	283	363	1,000	839	734	32	68	198	156	187
Food service managers (0310)	24	35	144	180	126	n/a	n/a	n/a	n/a	n/a
Business & financial operations (0500-0960)	163	172	470	360	365	29	29	70	78	72
Computer & mathematical (1005-1240)	109	110	195	194	197	31	25	63	32	72
Computer fields (1005-1021)	57	39	77	75	98	13	5	18	9	53
Architecture & engineering (1305-1560)	28	54	154	116	153	20	35	26	42	39
Engineers (1320-1530)	7	15	86	66	92	8	26	17	25	33
Life, physical, & social science (1600-1980)	34	54	74	66	85	13	13	14	14	31
Community & social service (2001-2060)	16	40	118	109	146	n/a	n/a	n/a	n/a	n/a
Legal occupations (2100-2180)	11	33	62	92	80	n/a	n/a	n/a	n/a	n/a
Education instruction & library (2205-2555)	155	264	1,226	973	946	17	43	109	147	121
Arts, design, ent., sports, media (2600-2920)	98	148	507	490	578	28	22	114	123	138
Healthcare practitioner & technical (3000-3550)	102	108	568	506	381	34	54	85	70	35
Registered nurses (3255)	13	28	128	109	159	16	7	10	9	10
Medical technologists, techs, LPNs (3300-3500)	77	77	221	180	111	13	28	25	27	6
Healthcare support (3601-3655)	116	103	470	466	357	29	15	151	163	113
Health care aids, nurse assists. (3601-3603)	85	74	171	196	195	24	15	101	70	50
Protective service (3700-3960)	75	56	267	250	207	n/a	n/a	n/a	n/a	n/a
Food preparation & serving related (4000-4150)	433	622	2,475	2,174	1,775	78	146	641	583	492
Chefs, head cooks, & cooks (4020, 4000)	120	129	573	468	378	34	38	253	182	186
Food prep. & fast food/counter (4030, 4055)	114	145	385	293	286	6	28	94	73	39
Waiters & waitresses (4110)	127	181	721	626	482	24	52	122	173	146
Build. & grounds cleaning, maint. (4200-4255)	311	326	756	521	418	83	125	453	378	297
Janitors & building cleaners (4220)	124	128	337	274	213	10	44	137	158	98
Maids & housekeeping cleaners (4230)	71	66	218	116	104	40	56	253	186	177
Landscapers, trimmers, grounds(4251-4255)	102	122	160	95	64	19	17	51	29	11
Personal care & service (4330-4655)	93	255	1,224	1,012	894	35	38	286	289	320
Hair, cosmetologists, barbers (4510, 4500)	21	19	321	276	177	n/a	n/a	n/a	n/a	n/a
Childcare workers (4600)	28	94	299	237	219	n/a	n/a	n/a	n/a	n/a
Sales & related (4700-4965)	585	607	2,184	2,046	1,807	75	57	329	376	265
First-line super. retail sales workers (4700)	75	34	325	228	178	5	1	36	74	42
Cashiers (4720)	197	211	467	492	435	21	9	63	101	86
Retail salespersons (4760)	157	252	902	786	599	18	27	159	131	86
Office & administrative support (5000-5940)	489	535	1,839	1,645	1,493	62	69	244	293	265
Customer service representatives (5240)	118	123	358	348	277	n/a	n/a	n/a	n/a	n/a
Receptionists & information clerks (5400)	63	47	219	200	184	n/a	n/a	n/a	n/a	n/a
Farming, fishing, & forestry (6005-6130)	81	67	86	78	48	101	63	65	26	27
Agricultural workers (6050)	65	59	48	49	32	96	52	47	19	18
Construction & Extraction (6200-6950)	475	545	1,136	868	696	125	176	392	366	254
Construction only (6200-6765)	459	536	1,096	847	672	125	176	387	361	254
Carpenters (6230)	47	54	154	142	126	10	41	54	73	59
Construction laborers (6260)	192	233	318	230	238	55	84	112	122	76
Installation, maint., & repair (7000-7640)	114	130	500	470	357	8	2	121	72	119
Production (7700-8990)	357	306	1,085	936	645	89	148	365	287	242
Butchers, meat & other food proc. (7810-7855)	24	20	32	35	21	1	3	21	25	15
Transpo. & material moving (9005-9760)	640	693	1,532	1,632	1,196	46	152	516	575	501
Driver/sales workers & truck drivers (9130)	170	191	339	223	243	6	25	100	107	93
Laborers, freight, stock & material mov. (9620)	196	168	257	307	176	12	16	54	60	60
Stockers & order fillers (9645)	85	101	205	279	148	n/a	n/a	n/a	n/a	n/a
Total	5,191	6,031	18,191	16,323	14,392	1,026	1,339	4,313	4,191	3,680

Source: Public-use files of the monthly Current Population Survey. Figures are for persons 16 and older. Public-use data may differ slightly from published BLS numbers; see text for details. Immigrants (legal and illegal) are also referred to as the “foreign-born”. Data not available (n/a) due to small sample size. The new occupational codes for 2020 can be found [here](#).

Table 3C. Native and Immigrant Unemployment Rate by Occupation, 2020

Occupation (Occupation Codes)	Natives					Immigrants					Both					Sample Size June
	Feb.	Mar.	Apr.	May	June	Feb.	Mar.	Apr.	May	June	Feb.	Mar.	Apr.	May	June	
Management (0010-0440)	1.7%	2.2%	6.0%	5.0%	4.3%	1.3%	2.7%	7.9%	6.2%	7.1%	1.7%	2.2%	6.3%	5.2%	4.6%	6,010
Food service managers (0310)	2.5%	3.6%	14.9%	20.0%	14.7%	n/a	n/a	n/a	n/a	n/a	2.2%	4.1%	15.3%	18.0%	13.3%	319
Business & financial operations (0500-0960)	2.0%	2.2%	6.0%	4.8%	5.1%	2.5%	2.3%	5.8%	5.8%	5.9%	2.1%	2.2%	6.0%	5.0%	5.2%	2,390
Computer & mathematical (1005-1240)	2.5%	2.6%	4.4%	4.4%	4.2%	2.0%	1.6%	4.1%	2.1%	4.5%	2.4%	2.3%	4.3%	3.8%	4.3%	1,627
Computer fields (1005-1021)	2.7%	1.8%	3.5%	3.3%	4.1%	1.3%	0.5%	1.8%	0.9%	4.8%	2.3%	1.4%	3.0%	2.6%	4.4%	878
Architecture & engineering (1305-1560)	1.0%	2.0%	5.7%	4.3%	5.8%	2.9%	5.3%	4.6%	6.7%	7.1%	1.4%	2.7%	5.5%	4.7%	6.0%	910
Engineers (1320-1530)	0.4%	0.8%	4.6%	3.5%	4.9%	0.6%	5.0%	3.6%	5.1%	7.1%	0.6%	1.7%	4.4%	3.9%	5.4%	658
Life, physical, & social science (1600-1980)	2.7%	4.1%	5.9%	4.8%	5.9%	3.5%	4.2%	4.0%	4.2%	8.0%	2.9%	4.1%	4.7%	4.7%	6.3%	540
Community & social service (2001-2060)	0.6%	1.6%	4.6%	4.2%	5.4%	n/a	n/a	n/a	n/a	n/a	0.6%	1.9%	4.7%	4.1%	5.2%	884
Legal occupations (2100-2180)	0.6%	1.9%	3.8%	5.1%	4.4%	n/a	n/a	n/a	n/a	n/a	1.0%	2.2%	3.7%	5.5%	4.1%	603
Education instruction & library (2205-2555)	1.7%	3.0%	14.1%	11.3%	11.0%	1.6%	4.3%	11.5%	15.4%	12.4%	1.7%	3.1%	13.9%	11.7%	11.1%	2,803
Arts, design, ent., sports, media (2600-2920)	3.3%	4.8%	17.5%	16.6%	18.2%	5.5%	4.0%	26.0%	26.2%	29.4%	3.6%	4.7%	18.6%	17.9%	19.6%	974
Healthcare practitioner & technical (3000-3550)	1.2%	1.3%	6.9%	6.0%	4.5%	2.1%	3.7%	5.7%	4.6%	2.3%	1.4%	1.6%	6.8%	5.8%	4.2%	2,849
Registered nurses (3255)	0.5%	1.0%	4.7%	3.9%	5.5%	3.2%	1.6%	2.1%	1.7%	1.9%	0.9%	1.1%	4.3%	3.5%	4.9%	991
Medical technologists, techs, LPNs (3300-3500)	2.9%	2.7%	8.7%	7.1%	4.5%	2.8%	7.1%	6.0%	6.3%	1.5%	2.9%	3.2%	8.3%	7.0%	4.1%	820
Healthcare support (3601-3655)	2.8%	2.5%	12.2%	12.1%	9.2%	2.5%	1.3%	13.8%	15.6%	10.3%	2.7%	2.3%	12.6%	12.8%	9.4%	1,367
Health care aids, nurse assistants (3601-3603)	3.1%	2.7%	7.0%	8.3%	7.8%	2.8%	1.7%	11.4%	8.3%	5.6%	3.0%	2.5%	9.2%	8.3%	7.2%	937
Protective service (3700-3960)	2.5%	2.0%	9.3%	8.8%	6.8%	4.0%	n/a	n/a	n/a	n/a	2.8%	2.0%	9.3%	9.5%	7.4%	870
Food preparation & serving related (4000-4150)	6.2%	9.1%	42.0%	36.0%	27.9%	4.0%	8.1%	40.7%	38.0%	31.0%	5.7%	8.9%	41.8%	36.4%	28.5%	2,052
Chefs, head cooks, & cooks (4020, 4000)	6.3%	7.0%	33.8%	27.9%	23.4%	3.9%	4.7%	37.4%	30.7%	28.7%	5.5%	6.3%	34.9%	28.6%	24.9%	615
Food prep. & fast food/counter (4030, 4055)	7.5%	10.0%	30.0%	22.9%	18.4%	1.9%	9.7%	33.7%	24.2%	12.5%	6.5%	9.9%	30.7%	23.1%	17.4%	475
Waiters & waitresses (4110)	7.0%	9.8%	55.5%	45.9%	33.4%	6.2%	14.7%	45.1%	59.6%	48.5%	6.8%	10.6%	53.7%	48.3%	36.0%	427
Build. & grounds cleaning, maint. (4200-4255)	8.5%	8.8%	21.3%	14.9%	11.1%	4.0%	6.1%	22.9%	19.0%	15.7%	6.9%	7.8%	21.9%	16.4%	12.6%	1,566
Janitors & building cleaners (4220)	7.8%	7.7%	21.5%	18.0%	13.9%	1.5%	5.5%	17.8%	20.5%	15.0%	5.9%	7.0%	20.3%	18.9%	14.2%	633
Maids & housekeeping cleaners (4230)	9.8%	10.4%	35.4%	21.7%	15.7%	4.7%	7.2%	38.0%	29.0%	27.3%	7.1%	8.6%	36.8%	25.7%	21.4%	341
Landscapers, trimmers, grounds (4251-4255)	13.0%	14.1%	19.1%	9.9%	6.2%	5.2%	4.8%	14.0%	8.1%	2.6%	10.5%	11.7%	17.5%	9.4%	5.2%	389
Personal care & service (4330-4655)	2.8%	7.3%	39.5%	31.6%	25.2%	3.7%	4.3%	39.1%	41.3%	44.5%	3.0%	6.7%	39.4%	33.4%	28.5%	1,173
Hair, cosmetologists, barbers (4510, 4500)	2.8%	2.5%	50.5%	34.9%	22.6%	n/a	n/a	n/a	n/a	n/a	2.2%	3.2%	50.3%	36.2%	26.8%	260
Childcare workers (4600)	3.0%	8.8%	31.6%	27.8%	22.2%	n/a	n/a	n/a	n/a	n/a	4.4%	8.4%	31.2%	27.4%	24.0%	331
Sales & related (4700-4965)	4.2%	4.5%	17.1%	15.7%	13.3%	3.9%	3.2%	16.8%	20.7%	13.5%	4.2%	4.4%	17.1%	16.3%	13.3%	4,267
First-line super. retail sales workers (4700)	2.7%	1.3%	11.8%	8.6%	6.5%	1.2%	0.2%	8.4%	16.0%	9.7%	2.5%	1.1%	11.4%	9.7%	7.0%	910
Cashiers (4720)	7.6%	8.5%	21.4%	21.5%	17.9%	4.6%	2.3%	15.3%	27.5%	23.9%	7.1%	7.6%	20.5%	22.3%	18.7%	712
Retail salespersons (4760)	5.8%	8.9%	34.7%	28.0%	19.9%	5.2%	7.5%	40.7%	40.2%	21.4%	5.7%	8.8%	35.5%	29.3%	20.1%	895
Office & administrative support (5000-5940)	3.3%	3.6%	12.6%	11.3%	10.0%	3.2%	3.6%	13.7%	15.2%	13.9%	3.3%	3.6%	12.7%	11.8%	10.5%	4,735
Customer service representatives (5240)	5.0%	5.3%	15.6%	16.0%	12.0%	n/a	n/a	n/a	n/a	n/a	5.4%	5.3%	15.1%	16.4%	13.0%	659
Receptionists & information clerks (5400)	5.3%	3.9%	20.9%	18.2%	17.1%	n/a	n/a	n/a	n/a	n/a	5.1%	4.7%	21.7%	19.8%	18.7%	337
Farming, fishing, & forestry (6005-6130)	10.9%	9.2%	11.3%	9.7%	6.9%	17.4%	12.4%	13.9%	6.1%	8.3%	13.7%	10.5%	12.3%	8.5%	7.3%	352
Agricultural workers (6050)	12.2%	10.7%	9.0%	8.2%	5.8%	18.5%	12.0%	11.8%	5.2%	6.0%	15.3%	11.3%	10.2%	7.1%	5.9%	269
Construction & extraction (6200-6950)	7.7%	8.9%	19.4%	14.6%	11.5%	4.8%	6.7%	17.7%	16.9%	11.2%	6.9%	8.2%	18.9%	15.2%	11.4%	2,299
Construction only (6200-6765)	7.7%	8.9%	19.2%	14.6%	11.4%	4.9%	6.8%	17.7%	16.8%	11.3%	6.8%	8.3%	18.8%	15.2%	11.4%	2,225
Carpenters (6230)	6.1%	6.2%	18.8%	16.1%	15.6%	2.4%	10.2%	15.1%	20.4%	16.2%	4.8%	7.5%	17.7%	17.3%	15.8%	340
Construction laborers (6260)	13.3%	16.0%	24.0%	18.4%	17.9%	6.5%	9.9%	15.5%	16.7%	9.8%	10.8%	13.8%	21.0%	17.8%	15.0%	518
Installation, maint., & repair (7000-7640)	2.7%	3.1%	12.3%	11.6%	8.5%	1.1%	0.3%	16.4%	8.5%	16.4%	2.4%	2.7%	12.9%	11.0%	9.7%	1,440
Production (7700-8990)	5.3%	4.7%	17.8%	14.8%	10.3%	4.3%	7.7%	21.3%	16.4%	13.5%	5.1%	5.4%	18.5%	15.1%	11.0%	2,262
Butchers, meat & other food proc. (7810-7855)	6.1%	5.2%	8.9%	10.7%	6.2%	0.6%	1.3%	9.4%	12.3%	10.9%	4.2%	3.8%	9.1%	11.3%	7.6%	139
Transport, & material moving (9005-9760)	6.5%	7.2%	17.0%	16.8%	13.1%	1.8%	6.2%	21.3%	23.9%	20.7%	5.5%	7.0%	17.9%	18.2%	14.7%	3,137
Driver/sales workers & truck drivers (9130)	6.0%	6.4%	11.8%	7.3%	8.2%	0.8%	3.3%	12.5%	13.3%	13.4%	4.9%	5.8%	12.0%	8.6%	9.1%	1,053
Laborers, freight, stock & material mov. (9620)	9.1%	9.1%	16.7%	18.4%	10.6%	2.7%	3.6%	15.2%	19.2%	20.0%	8.0%	8.0%	16.4%	18.5%	12.0%	510
Stockers & order fillers (9645)	6.2%	7.2%	14.8%	17.5%	9.8%	n/a	n/a	n/a	n/a	n/a	5.6%	6.9%	15.9%	18.4%	10.3%	456
Total	3.8%	4.5%	14.0%	12.4%	10.7%	3.6%	4.8%	16.4%	15.8%	13.8%	3.8%	4.5%	14.4%	13.0%	11.2%	45,640

Source: Public-use files of the monthly Current Population Survey. Figures are for persons 16 and older. Public-use data may differ slightly from published BLS numbers; see text for details. Immigrants (legal and illegal) are also referred to as the "foreign-born." Data not available (n/a) due to small sample size. The new occupational codes for 2020 can be found [here](#).

Table 4A. Number of Natives and Immigrants by Legal Status Working and Unemployed (thousands)

	Number Working						Number Unemployed					
	Feb. 20	Mar. 20	Apr. 20	May 20	June 20	June 19	Feb. 20	Mar. 20	Apr. 20	May 20	June 20	June 19
All U.S. Residents 16+	158,017	155,167	133,326	137,461	142,811	157,828	6,218	7,370	22,504	20,514	18,072	6,292
Black	18,151	17,717	15,202	15,382	15,845	17,971	1,206	1,342	2,934	3,056	2,845	1,170
White	97,535	96,269	83,960	87,125	89,973	98,068	3,032	3,475	12,310	10,466	9,053	3,298
Hispanic	28,311	27,531	22,625	23,321	24,794	27,721	1,438	1,841	5,126	4,852	4,212	1,268
No Bachelors 25+	79,535	77,682	65,005	67,161	69,157	80,373	3,391	3,884	12,775	11,312	9,277	2,893
Black	10,139	9,986	8,403	8,695	9,120	10,484	697	818	1,829	1,888	1,695	616
White	45,982	45,185	38,437	39,920	40,672	46,417	1,612	1,698	6,579	5,493	4,251	1,435
Hispanic	18,412	17,708	14,540	14,994	15,482	18,312	904	1,072	3,315	2,878	2,447	619
Bach. or More 25+	59,401	59,425	55,208	55,948	57,101	56,816	1,172	1,479	4,912	4,332	4,279	1,288
Black	5,773	5,683	5,210	5,077	4,887	5,097	130	107	478	432	440	119
White	40,802	40,751	37,979	38,713	39,583	39,652	746	962	3,218	2,705	2,706	864
Hispanic	5,489	5,656	5,102	5,161	5,596	4,974	115	173	606	642	556	170
Natives 16+	130,360	128,725	111,389	115,057	119,730	130,215	5,191	6,031	18,191	16,323	14,392	5,512
Black	15,320	15,015	12,700	13,124	13,500	15,218	1,088	1,234	2,520	2,591	2,331	1,051
White	92,977	91,936	80,504	83,397	85,876	93,609	2,909	3,284	11,685	9,864	8,574	3,194
Hispanic	15,289	15,306	12,555	12,789	14,055	14,750	844	1,089	2,827	2,746	2,530	860
No Bachelors 25+	64,111	63,214	53,176	55,138	56,712	64,078	2,771	3,021	9,899	8,610	6,846	2,456
Black	8,699	8,612	7,102	7,444	7,826	8,895	624	743	1,583	1,604	1,350	536
White	44,150	43,511	37,158	38,609	39,216	44,602	1,579	1,615	6,265	5,206	4,046	1,395
Hispanic	8,524	8,420	6,822	6,998	7,339	7,991	442	478	1,521	1,301	1,113	352
Bach. or More 25+	48,949	48,984	46,014	46,541	47,639	47,106	888	1,148	3,871	3,250	3,353	1,083
Black	4,539	4,513	4,149	4,164	4,028	4,150	102	87	358	320	323	95
White	38,343	38,331	35,893	36,435	37,121	37,243	667	867	2,966	2,448	2,494	823
Hispanic	3,308	3,505	3,242	3,181	3,585	3,065	47	119	297	289	346	101
Immigrants 16+	27,657	26,442	21,937	22,404	23,081	27,613	1,026	1,339	4,313	4,191	3,680	779
Hispanic	13,023	12,225	10,070	10,532	10,739	12,971	595	752	2,299	2,105	1,681	408
No Bachelors 25+	15,424	14,468	11,830	12,023	12,446	16,295	620	863	2,876	2,702	2,431	437
Hispanic	9,889	9,288	7,718	7,996	8,143	10,321	463	594	1,794	1,576	1,334	267
Bach. or More 25+	10,452	10,441	9,194	9,408	9,462	9,709	285	331	1,041	1,077	926	205
Hispanic	2,181	2,150	1,860	1,981	2,011	1,909	67	54	309	352	210	69
New Arrivals 16+¹	987	1,029	745	732	915	n/a	80	84	165	182	149	n/a
No Bachelors 25+	308	361	215	185	336	n/a	18	15	64	63	61	n/a
Bachelor's or More 25+	460	497	424	415	418	n/a	42	39	51	81	38	n/a
Est. Legal Imms. 16+	21,464	20,489	17,133	17,356	17,829	21,331	735	967	3,163	3,204	2,743	599
No Bachelors 25+	11,069	10,299	8,517	8,493	8,732	11,760	414	608	2,006	2,001	1,765	345
Bachelor's or More 25+	9,243	9,235	8,117	8,304	8,370	8,565	244	295	927	940	783	176
Est. Illegal Imms. 16+²	6,193	5,953	4,804	5,048	5,252	6,283	291	372	1,149	987	937	181
No Bachelors 25+	4,355	4,169	3,313	3,531	3,713	4,536	207	255	869	701	666	92
Bachelor's or More 25+	1,209	1,206	1,077	1,104	1,092	1,144	40	35	115	137	142	29

Source: Public-use files of the monthly Current Population Survey.

Immigrants (legal and illegal) are also referred to as the "foreign-born".

¹ Immigrants who arrived in the United States between 2018 and 2020, including both legal and illegal immigrants.

² Estimates for illegal immigrants are based on their demographic characteristics in 2018 applied to current labor market data, and should therefore be considered rough approximations of their employment situation. The figures are only for those illegal immigrants in the CPS and are not adjusted for undercount. See methods section for more detail.

Table 4B. Share of Natives and Immigrants Unemployed by Legal Status

	Feb. 20	Mar. 20	Apr. 20	May 20	June 20	June 19
All U.S. Residents 16+	3.8%	4.5%	14.4%	13.0%	11.2%	3.8%
Black	6.2%	7.0%	16.2%	16.6%	15.2%	6.1%
White	3.0%	3.5%	12.8%	10.7%	9.1%	3.3%
Hispanic	4.8%	6.3%	18.5%	17.2%	14.5%	4.4%
No Bachelors 25+	4.1%	4.8%	16.4%	14.4%	11.8%	3.5%
Black	6.4%	7.6%	17.9%	17.8%	15.7%	5.5%
White	3.4%	3.6%	14.6%	12.1%	9.5%	3.0%
Hispanic	4.7%	5.7%	18.6%	16.1%	13.6%	3.3%
Bach. or More 25+	1.9%	2.4%	8.2%	7.2%	7.0%	2.2%
Black	2.2%	1.9%	8.4%	7.8%	8.3%	2.3%
White	1.8%	2.3%	7.8%	6.5%	6.4%	2.1%
Hispanic	2.0%	3.0%	10.6%	11.1%	9.0%	3.3%
Natives 16+	3.8%	4.5%	14.0%	12.4%	10.7%	4.1%
Black	6.6%	7.6%	16.6%	16.5%	14.7%	6.5%
White	3.0%	3.4%	12.7%	10.6%	9.1%	3.3%
Hispanic	5.2%	6.6%	18.4%	17.7%	15.3%	5.5%
No Bachelors 25+	4.1%	4.6%	15.7%	13.5%	10.8%	3.7%
Black	6.7%	7.9%	18.2%	17.7%	14.7%	5.7%
White	3.5%	3.6%	14.4%	11.9%	9.4%	3.0%
Hispanic	4.9%	5.4%	18.2%	15.7%	13.2%	4.2%
Bach. or More 25+	1.8%	2.3%	7.8%	6.5%	6.6%	2.2%
Black	2.2%	1.9%	7.9%	7.1%	7.4%	2.2%
White	1.7%	2.2%	7.6%	6.3%	6.3%	2.2%
Hispanic	1.4%	3.3%	8.4%	8.3%	8.8%	3.2%
Immigrants 16+	3.6%	4.8%	16.4%	15.8%	13.8%	2.7%
Hispanic	4.4%	5.8%	18.6%	16.7%	13.5%	3.1%
No Bachelors 25+	3.9%	5.6%	19.6%	18.3%	16.3%	2.6%
Hispanic	4.5%	6.0%	18.9%	16.5%	14.1%	2.5%
Bach. or More 25+	2.7%	3.1%	10.2%	10.3%	8.9%	2.1%
Hispanic	3.0%	2.4%	14.2%	15.1%	9.5%	3.5%
New Arrivals 16+¹	7.5%	7.6%	18.1%	19.9%	14.0%	n/a
No Bachelors 25+	5.5%	4.0%	22.9%	25.2%	15.4%	n/a
Bachelor's or More 25+	8.4%	7.2%	10.8%	16.4%	8.2%	n/a
Est. Legal Imms. 16+	3.3%	4.5%	15.6%	15.6%	13.3%	2.7%
No Bachelors 25+	3.6%	5.6%	19.1%	19.1%	16.8%	2.8%
Bachelor's or More 25+	2.6%	3.1%	10.2%	10.2%	8.6%	2.0%
Est. Illegal Imms. 16+²	4.5%	5.9%	19.3%	16.4%	15.1%	2.8%
No Bachelors 25+	4.5%	5.8%	20.8%	16.6%	15.2%	2.0%
Bachelor's or More 25+	3.2%	2.9%	9.6%	11.0%	11.5%	2.5%

Source: Public-use files of the monthly Current Population Survey. Immigrants (legal and illegal) are also referred to as the “foreign-born”.

¹ Immigrants who arrived in the United States between 2018 and 2020, including both legal and illegal immigrants.

² Estimates for illegal immigrants are based on their demographic characteristics in 2018 applied to current labor market data, and should therefore be considered rough approximations of their employment situation. The figures are only for those illegal immigrants in the CPS and are not adjusted for undercount. See methods section for more detail.

Table 5A. Number of Natives and Immigrants by Legal Status in and out of the Labor Force (thousands)

	Number in Labor Force						Number Not in Labor Force					
	Feb. 20	Mar. 20	Apr. 20	May 20	June 20	June 19	Feb. 20	Mar. 20	Apr. 20	May 20	June 20	June 19
All U.S. Residents 16-64	153,022	151,851	145,526	147,868	150,603	153,763	52,660	53,832	60,162	57,854	55,116	52,484
Black	18,375	18,120	17,268	17,551	17,853	18,317	7,676	8,001	8,920	8,586	8,216	7,622
White	92,102	91,708	88,393	89,839	91,093	93,370	29,160	29,383	32,729	31,171	29,855	28,692
Hispanic	28,765	28,403	26,848	27,355	28,094	28,144	10,310	10,741	12,338	11,898	11,208	10,704
No Bachelors 25-64	76,514	75,448	71,898	72,605	72,549	77,247	27,229	27,452	29,976	29,205	28,232	28,194
Black	10,154	10,159	9,649	9,993	10,231	10,543	4,340	4,533	4,919	4,961	4,863	4,600
White	42,934	42,436	40,699	41,102	40,618	43,412	15,210	14,971	16,221	15,579	15,087	15,589
Hispanic	18,601	18,087	17,212	17,255	17,262	18,270	5,670	5,965	6,657	6,499	6,198	5,933
Bach. or More 25-64	55,772	56,337	55,698	56,042	56,985	53,766	8,655	8,943	10,617	10,382	10,474	9,303
Black	5,603	5,497	5,402	5,213	5,074	4,949	853	883	1,110	953	929	780
White	37,742	38,125	37,636	37,977	38,661	36,959	5,582	5,721	6,714	6,529	6,707	6,075
Hispanic	5,335	5,552	5,448	5,601	5,906	4,959	709	771	1,090	1,107	1,136	944
Natives 16-64	125,992	125,580	120,571	122,521	125,076	126,737	44,044	44,934	49,775	47,995	45,698	43,306
Black	15,637	15,494	14,518	14,964	15,080	15,588	7,034	7,266	7,925	7,637	7,401	6,877
White	87,820	87,548	84,653	85,877	86,882	89,149	27,830	28,050	31,074	29,675	28,360	27,117
Hispanic	15,699	15,951	14,928	15,137	16,112	15,267	6,276	6,522	7,374	7,165	6,629	6,369
No Bachelors 25-64	61,421	60,908	57,915	58,607	58,382	61,378	22,215	22,215	23,759	23,268	22,629	22,733
Black	8,778	8,818	8,206	8,544	8,637	8,978	3,791	4,124	4,386	4,484	4,465	4,230
White	41,255	40,814	39,233	39,658	39,116	41,733	14,561	14,376	15,416	14,840	14,409	14,811
Hispanic	8,662	8,589	8,043	8,020	8,128	8,095	2,598	2,650	2,890	2,835	2,666	2,630
Bach. or More 25-64	45,738	46,284	46,036	46,079	47,121	44,355	6,650	6,880	8,189	8,096	8,205	7,039
Black	4,415	4,381	4,285	4,236	4,138	4,018	718	755	957	789	815	640
White	35,417	35,837	35,513	35,656	36,193	34,675	5,178	5,273	6,168	6,055	6,146	5,487
Hispanic	3,226	3,490	3,385	3,351	3,780	3,072	364	429	580	613	682	481
Immigrants 16-64	27,030	26,271	24,955	25,347	25,527	27,026	8,616	8,898	10,387	9,858	9,419	9,178
Hispanic	13,066	12,452	11,920	12,218	11,982	12,876	4,035	4,219	4,965	4,733	4,579	4,335
No Bachelor's 25-64	15,093	14,540	13,984	13,998	14,167	15,870	5,014	5,237	6,218	5,937	5,603	5,461
Hispanic	9,939	9,498	9,169	9,236	9,133	10,175	3,072	3,315	3,767	3,664	3,532	3,303
Bach. or More 25-64	10,033	10,052	9,663	9,963	9,863	9,410	2,006	2,062	2,428	2,287	2,269	2,265
Hispanic	2,109	2,062	2,063	2,250	2,126	1,888	346	342	510	495	454	463
New Arrivals 16-64¹	1,042	1,097	898	899	1,046	n/a	747	765	774	724	833	n/a
No Bachelors 25-64	309	367	272	233	383	n/a	228	236	251	238	322	n/a
Bach. or More 25-64	493	529	469	495	452	n/a	265	279	249	243	260	n/a
Est. Legal Imms. 16-64	20,564	19,965	19,015	19,325	19,350	20,581	6,186	6,301	7,415	6,972	6,671	6,741
No Bachelors 25-64	10,547	10,131	9,812	9,778	9,796	11,258	3,440	3,540	4,275	4,060	3,869	3,963
Bach. or More 25-64	8,787	8,815	8,474	8,724	8,632	8,238	1,692	1,726	2,051	1,942	1,926	1,865
Est. Illegal Imms. 16-64²	6,466	6,306	5,940	6,021	6,177	6,445	2,430	2,597	2,972	2,886	2,747	2,437
No Bachelors 25-64	4,547	4,410	4,172	4,219	4,371	4,611	1,574	1,697	1,942	1,877	1,735	1,497
Bach. or More 25-64	1,246	1,237	1,189	1,239	1,231	1,172	314	336	377	344	344	400

Source: Public-use files of the monthly Current Population Survey.

Immigrants (legal and illegal) are also referred to as the "foreign-born".

¹ Immigrants who arrived in the United States between 2018 and 2020, including both legal and illegal immigrants.

² Estimates for Illegal immigrants are based on their demographic characteristics in 2018 applied to current labor market data, and should therefore be considered rough approximations of their employment situation. The figures are only for those illegal immigrants in the CPS and are not adjusted for undercount. See methods section for more detail.

Table 5B. Share of Natives and Immigrants by Legal Status in the Labor Force

	Feb. 20	Mar. 20	Apr. 20	May 20	June 20	June 19
All U.S. Residents 16-64	74%	74%	71%	72%	73%	75%
Black	71%	69%	66%	67%	68%	71%
White	76%	76%	73%	74%	75%	76%
Hispanic	74%	73%	69%	70%	71%	72%
No Bachelors 25-64	74%	73%	71%	71%	72%	73%
Black	70%	69%	66%	67%	68%	70%
White	74%	74%	72%	73%	73%	74%
Hispanic	77%	75%	72%	73%	74%	75%
Bach. or More 25-64	87%	86%	84%	84%	84%	85%
Black	87%	86%	83%	85%	85%	86%
White	87%	87%	85%	85%	85%	86%
Hispanic	88%	88%	83%	83%	84%	84%
Natives 16-64	74%	74%	71%	72%	73%	75%
Black	69%	68%	65%	66%	67%	69%
White	76%	76%	73%	74%	75%	77%
Hispanic	71%	71%	67%	68%	71%	71%
No Bachelors 25-64	73%	73%	71%	72%	72%	73%
Black	69%	68%	65%	66%	66%	68%
White	74%	74%	72%	73%	73%	74%
Hispanic	77%	76%	74%	74%	75%	75%
Bach. or More 25-64	87%	87%	85%	85%	85%	86%
Black	86%	85%	82%	84%	84%	86%
White	87%	87%	85%	85%	85%	86%
Hispanic	90%	89%	85%	85%	85%	86%
Immigrants 16-64	76%	75%	71%	72%	73%	75%
Hispanic	76%	75%	71%	72%	72%	75%
No Bachelor's 25-64	75%	74%	69%	70%	72%	74%
Hispanic	76%	74%	71%	72%	72%	75%
Bach. or More 25-64	83%	83%	80%	81%	81%	81%
Hispanic	86%	86%	80%	82%	82%	80%
New Arrivals 16-64¹	58%	59%	54%	55%	56%	n/a
No Bachelors 25-64	58%	61%	52%	49%	54%	n/a
Bach. or More 25-64	65%	65%	65%	67%	63%	n/a
Est. Legal Imms. 16-64	77%	76%	72%	73%	74%	75%
No Bachelors 25-64	75%	74%	70%	71%	72%	74%
Bach. or More 25-64	84%	84%	81%	82%	82%	82%
Est. Illegal Imms. 16-64²	73%	71%	67%	68%	69%	73%
No Bachelors 25-64	74%	72%	68%	69%	72%	75%
Bach. or More 25-64	80%	79%	76%	78%	78%	75%

Source: Public-use files of the monthly Current Population Survey.

Immigrants (legal and illegal) are also referred to as the “foreign-born”.

¹ Immigrants who arrived in the United States between 2018 and 2020, including both legal and illegal immigrants.

² Estimates for illegal immigrants are based on their demographic characteristics in 2018 applied to current labor market data, and should therefore be considered rough approximations of their employment situation. The figures are only for those illegal immigrants in the CPS and are not adjusted for undercount. See methods section for more detail.

Table 6. Unemployment for Natives and Immigrants, by Selected States

Number Unemployed (thousands)												
State	Natives						All Immigrants					
	Feb. 20	Mar. 20	Apr. 20	May 20	June 20	June 19	Feb. 20	Mar. 20	Apr. 20	May 20	June 20	June 19
Ariz.	120	148	403	297	312	150	32	39	81	43	68	48
Calif.	623	725	2,124	2,007	1,859	618	267	360	937	896	866	191
Fla.	258	341	887	923	703	296	91	115	427	501	426	82
Ga.	180	177	483	411	386	154	27	49	135	62	37	19
Hawaii	15	5	102	90	65	16	1	2	35	39	23	3
Ill.	175	223	862	743	723	193	54	54	168	174	150	34
Md.	94	108	195	229	235	101	25	23	82	58	36	27
Mass.	112	98	389	400	392	86	19	39	195	190	190	16
Nev.	63	87	314	287	181	90	6	17	127	98	59	4
N.J.	130	101	477	426	536	104	51	70	241	250	193	16
N.M.	48	46	83	83	77	51	5	10	13	10	12	1
N.Y.	247	291	954	845	950	233	107	124	462	520	442	85
N.C.	145	183	561	576	368	238	3	14	57	65	63	9
Texas	399	538	1,202	1,214	1,063	466	116	128	448	418	334	75
Va.	84	107	368	303	292	83	11	24	93	94	122	18
Wash.	143	179	525	442	302	169	18	32	116	116	51	16
Nation	5,191	6,031	18,191	16,323	14,392	5,512	1,026	1,339	4,313	4,191	3,680	779

Unemployment Rate												
State	Natives						All Immigrants					
	Feb. 20	Mar. 20	Apr. 20	May 20	June 20	June 19	Feb. 20	Mar. 20	Apr. 20	May 20	June 20	June 19
Ariz.	4.0%	5.0%	14.4%	10.0%	10.5%	5.1%	4.9%	6.3%	11.2%	7.6%	11.4%	6.7%
Calif.	4.7%	5.4%	16.5%	15.5%	14.1%	4.7%	4.4%	6.2%	16.9%	16.6%	15.6%	3.1%
Fla.	3.4%	4.5%	13.1%	13.4%	10.1%	4.0%	3.3%	4.3%	15.6%	17.4%	14.9%	2.8%
Ga.	4.1%	4.1%	11.6%	9.7%	9.0%	3.5%	3.3%	5.5%	18.2%	8.6%	5.5%	2.7%
Hawaii	2.8%	1.0%	20.1%	17.8%	12.6%	3.2%	1.0%	1.8%	30.6%	30.5%	19.3%	1.8%
Ill.	3.4%	4.3%	17.6%	14.5%	13.4%	3.6%	4.2%	4.4%	14.0%	15.6%	14.1%	2.9%
Md.	3.9%	4.4%	8.5%	9.2%	8.9%	3.7%	3.1%	2.9%	11.0%	8.8%	5.8%	4.3%
Mass.	3.8%	3.4%	14.2%	14.1%	13.4%	2.9%	2.3%	4.5%	27.9%	25.2%	23.5%	1.9%
Nev.	4.8%	6.9%	26.9%	23.6%	14.7%	7.2%	2.1%	5.4%	40.3%	39.1%	20.8%	1.3%
N.J.	4.2%	3.2%	15.1%	14.0%	16.7%	3.3%	3.5%	4.9%	19.7%	18.1%	14.4%	1.2%
N.M.	5.8%	5.6%	10.5%	10.2%	9.5%	5.9%	4.2%	8.2%	10.9%	8.8%	9.4%	0.9%
N.Y.	3.6%	4.2%	14.6%	12.9%	13.6%	3.5%	3.8%	4.7%	20.1%	22.3%	18.8%	3.2%
N.C.	3.2%	4.2%	13.2%	13.1%	8.4%	5.1%	0.4%	2.1%	10.0%	12.1%	11.6%	1.7%
Texas	3.7%	4.9%	11.6%	11.6%	9.7%	4.2%	3.4%	4.0%	14.6%	12.8%	11.0%	2.6%
Va.	2.3%	2.9%	10.1%	8.4%	7.8%	2.2%	1.3%	3.1%	13.9%	13.2%	17.1%	2.3%
Wash.	4.3%	5.4%	15.7%	13.6%	9.6%	5.4%	2.8%	5.4%	19.8%	16.1%	7.1%	2.1%
Nation	3.8%	4.5%	14.0%	12.4%	10.7%	4.1%	3.6%	4.8%	16.4%	15.8%	13.8%	2.7%

Source: Public-use files of the monthly Current Population Survey for persons 16 and older. Immigrants (legal and illegal) are also referred to as the "foreign-born".

Table 7. Labor Force Participation for Natives & Immigrants by Selected States

Number Not in the Labor Force (thousands)												
State	Natives						All Immigrants					
	Feb. 20	Mar. 20	Apr. 20	May 20	June 20	June 19	Feb. 20	Mar. 20	Apr. 20	May 20	June 20	June 19
Ariz.	964	924	952	931	937	933	177	187	284	208	251	195
Calif.	4,859	4,924	5,457	5,558	5,111	4,834	2,110	2,168	2,350	2,429	2,362	2,377
Fla.	2,808	2,873	3,229	3,037	3,166	2,586	700	752	1,102	937	903	879
Ga.	1,613	1,648	1,870	1,822	1,742	1,624	208	227	200	244	242	209
Hawaii	199	186	211	206	209	182	36	34	37	42	33	32
Ill.	1,670	1,734	1,896	1,804	1,614	1,501	413	348	396	299	255	393
Md.	717	657	848	784	698	644	163	170	259	165	162	121
Mass.	729	832	1,037	950	779	808	228	247	318	266	279	254
Nev.	387	417	467	467	472	397	76	86	91	113	81	92
N.J.	966	874	1,157	1,080	1,119	1,044	326	377	311	405	352	334
N.M.	344	335	370	358	351	337	42	52	54	52	45	45
N.Y.	2,313	2,489	2,838	2,738	2,653	2,782	961	953	1,203	1,165	965	848
N.C.	1,480	1,632	1,802	1,741	1,594	1,540	206	222	215	159	166	168
Texas	4,030	4,089	4,477	4,325	4,026	3,816	976	1,096	1,241	1,166	1,104	1,136
Va.	1,050	1,088	1,105	1,062	956	924	145	102	224	206	224	208
Wash.	979	1,093	1,071	1,011	1,044	1,002	225	211	212	211	180	201
Nation	44,044	44,934	49,775	47,995	45,698	43,306	8,616	8,898	10,387	9,858	9,419	9,178

Labor Force Participation Rate												
State	Natives						All Immigrants					
	Feb. 20	Mar. 20	Apr. 20	May 20	June 20	June 19	Feb. 20	Mar. 20	Apr. 20	May 20	June 20	June 19
Ariz.	74%	75%	74%	74%	75%	75%	78%	76%	71%	73%	70%	79%
Calif.	72%	72%	69%	69%	71%	72%	73%	72%	69%	68%	69%	71%
Fla.	72%	71%	66%	66%	67%	73%	78%	77%	70%	74%	75%	76%
Ga.	72%	71%	68%	68%	70%	71%	79%	79%	78%	74%	73%	77%
Hawaii	71%	72%	69%	69%	69%	72%	78%	78%	74%	72%	76%	81%
Ill.	74%	73%	71%	71%	76%	77%	74%	77%	74%	78%	79%	74%
Md.	76%	78%	72%	72%	78%	80%	82%	82%	73%	79%	78%	83%
Mass.	79%	76%	71%	71%	78%	77%	77%	77%	67%	73%	74%	76%
Nev.	76%	74%	70%	70%	71%	75%	77%	77%	77%	68%	77%	76%
N.J.	75%	77%	72%	72%	72%	74%	81%	78%	79%	77%	78%	79%
N.M.	69%	69%	66%	66%	68%	70%	73%	69%	68%	69%	73%	71%
N.Y.	73%	72%	68%	68%	71%	69%	73%	72%	64%	65%	70%	75%
N.C.	74%	71%	69%	69%	72%	74%	77%	74%	72%	77%	76%	75%
Texas	72%	71%	68%	68%	72%	73%	77%	73%	70%	73%	72%	71%
Va.	76%	76%	75%	75%	78%	79%	85%	88%	74%	77%	75%	78%
Wash.	76%	74%	74%	74%	74%	75%	73%	72%	73%	77%	79%	78%
Nation	74%	74%	71%	72%	73%	75%	76%	75%	71%	72%	73%	75%

Source: Public-use files of the monthly Current Population Survey for persons 16 to 64. Immigrants (legal and illegal) are also referred to as the “foreign-born”. Those not in the labor force are neither working nor looking for work. The labor force participation rate is the share of people in the labor force. Public-use data may differ slightly from published BLS numbers; see text for details.

Table 8. Unemployment for Natives and Immigrants Without a Bachelor’s Degree by Selected States

Number Unemployed (thousands)												
State	Natives						All Immigrants					
	Feb. 20	Mar. 20	Apr. 20	May 20	June 20	June 19	Feb. 20	Mar. 20	Apr. 20	May 20	June 20	June 19
Ariz.	94	118	307	221	230	131	26	28	73	39	55	41
Calif.	468	542	1,421	1,418	1,204	434	215	307	723	666	641	126
Fla.	192	247	604	605	429	212	55	73	294	334	308	79
Ga.	127	115	356	304	295	123	12	17	111	49	19	12
Hawaii	12	4	73	62	49	12	1	1	27	30	17	2
Ill.	144	159	624	546	480	169	39	44	127	146	129	34
Md.	60	84	119	146	142	64	13	11	47	39	31	4
Mass.	78	73	254	248	265	48	11	24	160	144	146	14
Nev.	49	58	267	250	143	71	6	12	98	79	54	n/a
N.J.	105	93	330	331	362	66	32	49	193	195	154	16
N.M.	44	41	75	73	67	43	5	10	12	9	12	1
N.Y.	174	216	635	639	685	157	62	95	294	354	269	64
N.C.	129	156	479	504	261	194	3	14	53	51	53	9
Texas	345	439	976	1,072	895	347	101	105	332	288	227	44
Va.	53	81	270	204	178	75	4	11	71	57	72	3
Wash.	116	150	405	354	216	129	14	21	81	94	44	10
Nation	4,154	4,770	13,854	12,662	10,465	4,268	726	992	3,215	3,059	2,664	554

Unemployment Rate												
State	Natives						All Immigrants					
	Feb. 20	Mar. 20	Apr. 20	May 20	June 20	June 19	Feb. 20	Mar. 20	Apr. 20	May 20	June 20	June 19
Ariz.	4.9%	6.0%	17.1%	11.3%	12.0%	6.5%	5.5%	6.5%	13.5%	9.5%	14.4%	8.0%
Calif.	5.9%	6.9%	19.7%	19.6%	16.6%	5.6%	5.5%	8.0%	20.1%	19.9%	18.7%	3.1%
Fla.	4.0%	5.3%	14.9%	14.5%	10.4%	4.4%	3.2%	4.3%	17.3%	18.1%	17.9%	4.0%
Ga.	4.6%	4.4%	14.1%	11.5%	10.9%	4.5%	2.5%	3.3%	26.0%	10.5%	4.4%	2.4%
Hawaii	3.7%	1.1%	23.4%	20.5%	15.3%	3.5%	1.5%	1.0%	36.5%	38.6%	23.2%	2.1%
Ill.	5.3%	5.7%	24.6%	20.1%	16.4%	5.5%	5.4%	6.1%	18.2%	20.7%	19.8%	5.0%
Md.	4.8%	6.8%	10.0%	12.3%	11.0%	4.6%	3.3%	3.0%	13.0%	12.8%	9.8%	1.1%
Mass.	5.6%	5.5%	20.6%	19.7%	19.5%	3.4%	2.6%	5.5%	42.7%	34.2%	32.5%	2.7%
Nev.	5.2%	6.6%	30.8%	28.0%	16.5%	8.2%	2.9%	5.5%	44.6%	42.5%	25.4%	n/a
N.J.	6.6%	5.8%	21.6%	21.7%	21.8%	3.8%	4.3%	8.7%	33.6%	26.7%	23.5%	2.4%
N.M.	7.8%	7.4%	13.9%	14.3%	12.7%	7.1%	5.5%	10.5%	12.2%	9.8%	11.5%	1.1%
N.Y.	5.0%	6.4%	20.2%	18.5%	18.6%	4.4%	3.8%	6.5%	24.6%	29.8%	20.5%	4.0%
N.C.	4.7%	5.9%	19.3%	19.3%	10.2%	6.7%	0.7%	3.3%	16.1%	23.2%	18.2%	2.6%
Texas	4.9%	6.1%	14.8%	15.9%	12.7%	4.7%	4.4%	4.9%	16.5%	14.3%	11.4%	2.1%
Va.	2.9%	4.5%	15.8%	12.0%	9.6%	3.8%	1.1%	2.7%	20.6%	18.0%	20.1%	0.8%
Wash.	5.7%	7.8%	21.1%	19.5%	12.4%	6.9%	3.5%	5.8%	22.9%	21.9%	10.6%	2.0%
Nation	5.0%	5.8%	18.0%	16.1%	13.0%	5.0%	4.1%	5.9%	20.4%	19.3%	16.6%	3.0%

Source: Public-use files of the monthly Current Population Survey for persons 16 and older. Immigrants (legal and illegal) are also referred to as the “foreign-born”. Public-use data may differ slightly from published BLS numbers; see text for details.

Table 9. Labor Force Participation for Natives and Immigrants Without a Bachelor’s by Selected States

Number Not in the Labor Force (thousands)												
State	Natives						All Immigrants					
	Feb. 20	Mar. 20	Apr. 20	May 20	June 20	June 19	Feb. 20	Mar. 20	Apr. 20	May 20	June 20	June 19
Ariz.	813	795	811	810	801	734	142	149	241	171	200	149
Calif.	4,017	3,971	4,466	4,392	3,980	3,913	1,651	1,723	1,781	1,886	1,815	1,842
Fla.	2,325	2,365	2,496	2,379	2,438	2,202	516	560	834	746	737	674
Ga.	1,337	1,430	1,508	1,490	1,408	1,299	139	167	133	181	188	152
Hawaii	159	147	165	172	172	151	27	23	26	33	27	29
Ill.	1,381	1,464	1,517	1,436	1,269	1,210	317	245	290	222	159	257
Md.	592	527	687	611	544	454	123	99	165	96	94	79
Mass.	616	707	808	750	592	602	138	136	201	149	180	166
Nev.	324	324	363	388	387	326	53	57	68	90	64	74
N.J.	716	660	840	810	827	869	233	278	224	261	223	225
N.M.	294	287	319	316	301	290	39	49	54	51	41	38
N.Y.	1,916	1,908	2,200	2,081	2,063	2,184	702	688	893	838	713	560
N.C.	1,260	1,391	1,517	1,398	1,238	1,224	158	186	183	134	153	118
Texas	3,435	3,507	3,725	3,537	3,246	3,231	772	888	948	923	862	840
Va.	865	888	918	850	730	721	110	79	182	154	161	145
Wash.	737	874	887	824	826	788	166	152	159	147	128	164
Nation	36,862	37,393	40,865	39,109	36,686	35,629	6,467	6,691	7,773	7,410	7,033	6,780

Labor Force Participation Rate												
State	Natives						All Immigrants					
	Feb. 20	Mar. 20	Apr. 20	May 20	June 20	June 19	Feb. 20	Mar. 20	Apr. 20	May 20	June 20	June 19
Ariz.	69%	71%	68%	70%	70%	72%	76%	74%	69%	70%	65%	77%
Calif.	65%	65%	60%	61%	63%	65%	69%	68%	66%	63%	64%	68%
Fla.	66%	65%	60%	62%	61%	67%	76%	74%	65%	70%	69%	74%
Ga.	66%	63%	61%	62%	64%	67%	76%	75%	75%	71%	70%	76%
Hawaii	65%	66%	63%	62%	63%	67%	76%	77%	72%	67%	71%	76%
Ill.	65%	64%	61%	64%	69%	71%	68%	74%	69%	74%	79%	71%
Md.	66%	69%	62%	64%	69%	74%	75%	79%	68%	76%	77%	81%
Mass.	67%	63%	58%	61%	68%	69%	75%	75%	64%	73%	71%	74%
Nev.	73%	72%	69%	68%	67%	71%	78%	78%	76%	66%	76%	74%
N.J.	66%	68%	62%	63%	64%	64%	75%	65%	70%	72%	73%	73%
N.M.	64%	64%	61%	60%	62%	66%	68%	65%	64%	64%	71%	70%
N.Y.	62%	62%	57%	61%	62%	60%	68%	67%	56%	57%	64%	72%
N.C.	67%	64%	60%	63%	66%	69%	74%	70%	64%	62%	64%	73%
Texas	66%	66%	62%	64%	67%	68%	74%	70%	67%	68%	69%	70%
Va.	66%	65%	64%	65%	70%	72%	78%	82%	64%	66%	68%	72%
Wash.	72%	67%	67%	67%	67%	70%	70%	70%	68%	74%	75%	73%
Nation	68%	67%	64%	65%	67%	69%	72%	70%	66%	67%	69%	72%

Source: Public-use files of the monthly Current Population Survey for persons 16 to 64. Immigrants (legal and illegal) are also referred to as the “foreign-born”. Those not in the labor force are neither working nor looking for work. The labor force participation rate is the share of working age people in the labor force. Public-use data may differ slightly from published BLS numbers; see text for details.

End Notes

¹ [“Basic Monthly CPS”](#), U.S. Census Bureau, undated.

² [“State-Level Unauthorized Population and Eligible-to-Naturalize Estimates”](#), Center for Migration Studies, undated.

³ In 2018, CMS estimated a total illegal immigrant population of 10.6 million, which includes an undercount adjustment for those missed in Census Bureau data. Our analysis of the CPS totals to 9.8 million illegal immigrants, reflecting a 7.5 percent undercount.

⁴ [“Monthly Current Population Survey Public Use Microdata Files”](#), U.S. Census Bureau, undated.

⁵ [“Table A-7. Employment status of the civilian population by nativity and sex, not seasonally adjusted”](#), U.S. Bureau of Labor Statistics, June 12, 2020.

⁶ For a brief discussion of the problems with the CPS beginning in March, see the section entitled, “Coronavirus (COVID-19) Impact on June 2020 Establishment and Household Survey Data” at the bottom of the June Employment Situation [press release](#). For a more detailed look at the issues see the [statement](#) issued by BLS on the matter for June.